



**VRZS- MK5**

1
2

1
2
5


--

VRZS-MK5

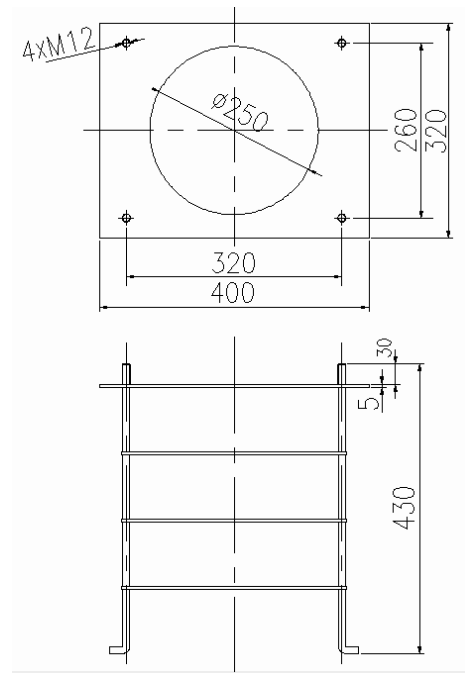
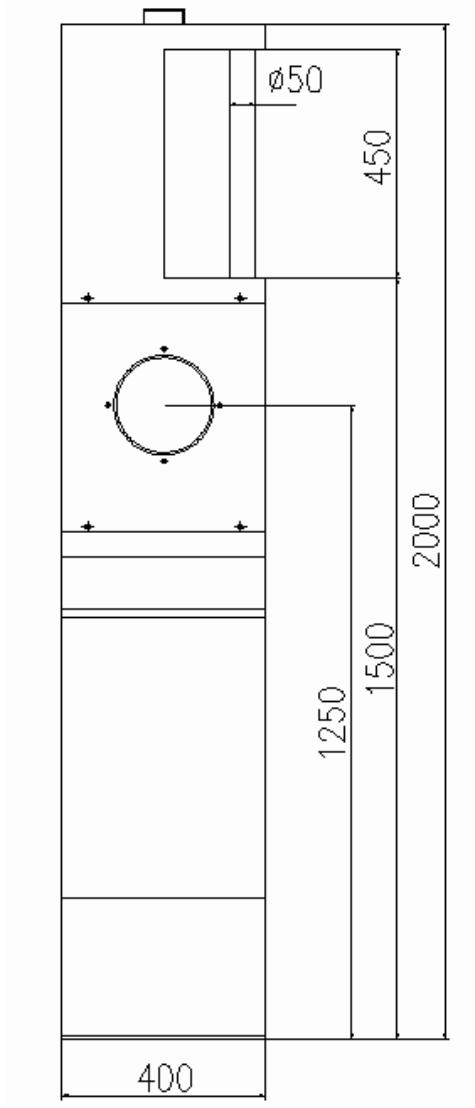
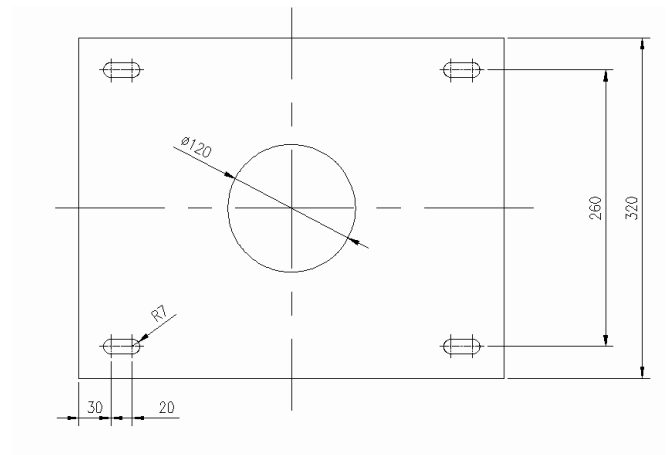
AC

100~240VAC 50Hz/60 Hz

**1.**

3

400× 200× 2000mm ( )



4

~~VRZS-MK5~~

PLC

I/O

1

RS232

15

RJ45

100

5

1

AC

L/N

L/N 12V+ 12V- 12V+ 12V-

AC220V

2

I/O

I/O

3

:

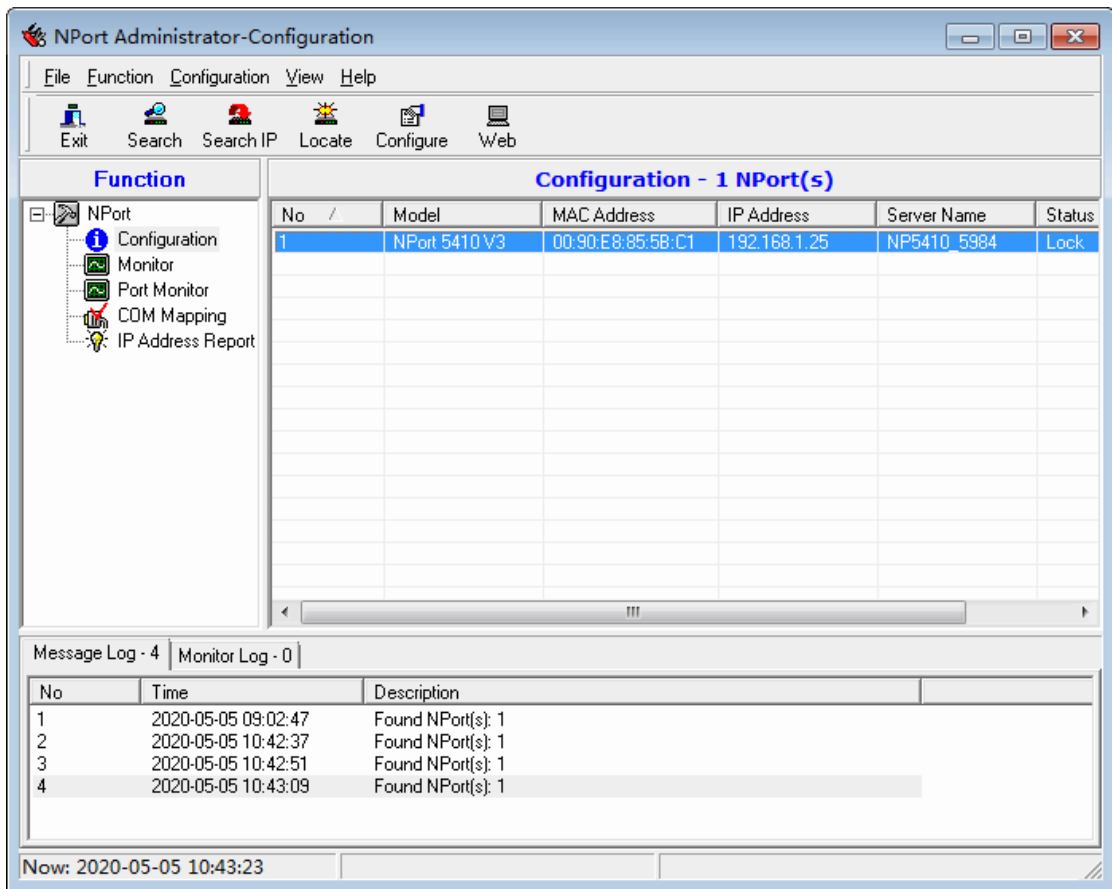
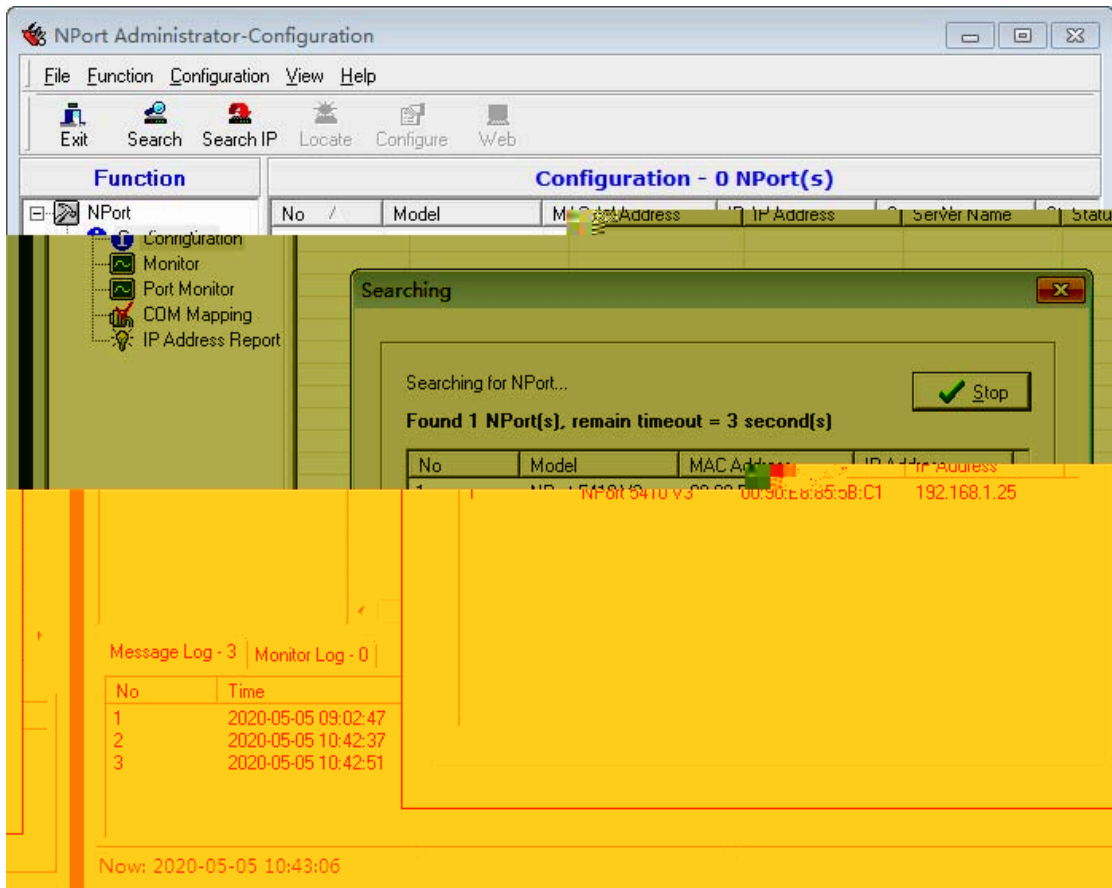
4

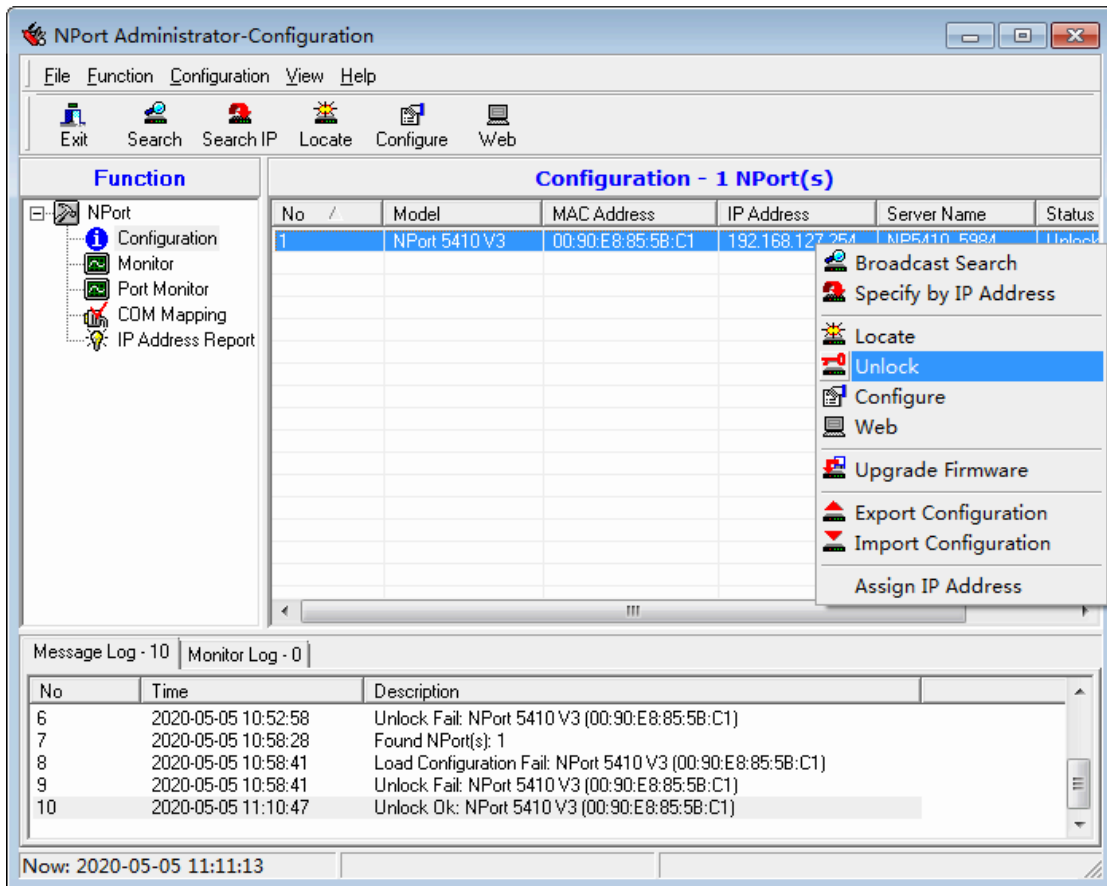
PLC

PORT1, RS232

PORT

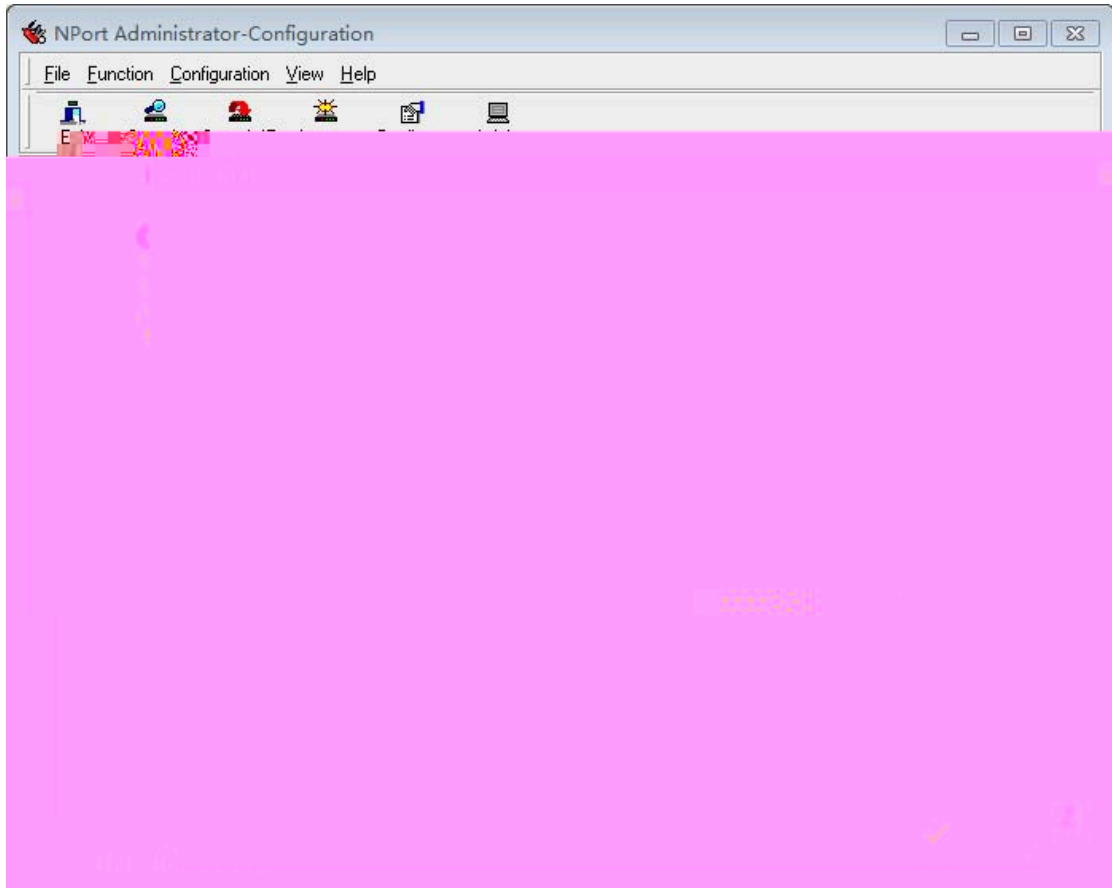






NPort

“



Nport

**IPAddress:IP**

**Netmask**

**Gateway**

**IP Configuration**

IP Static

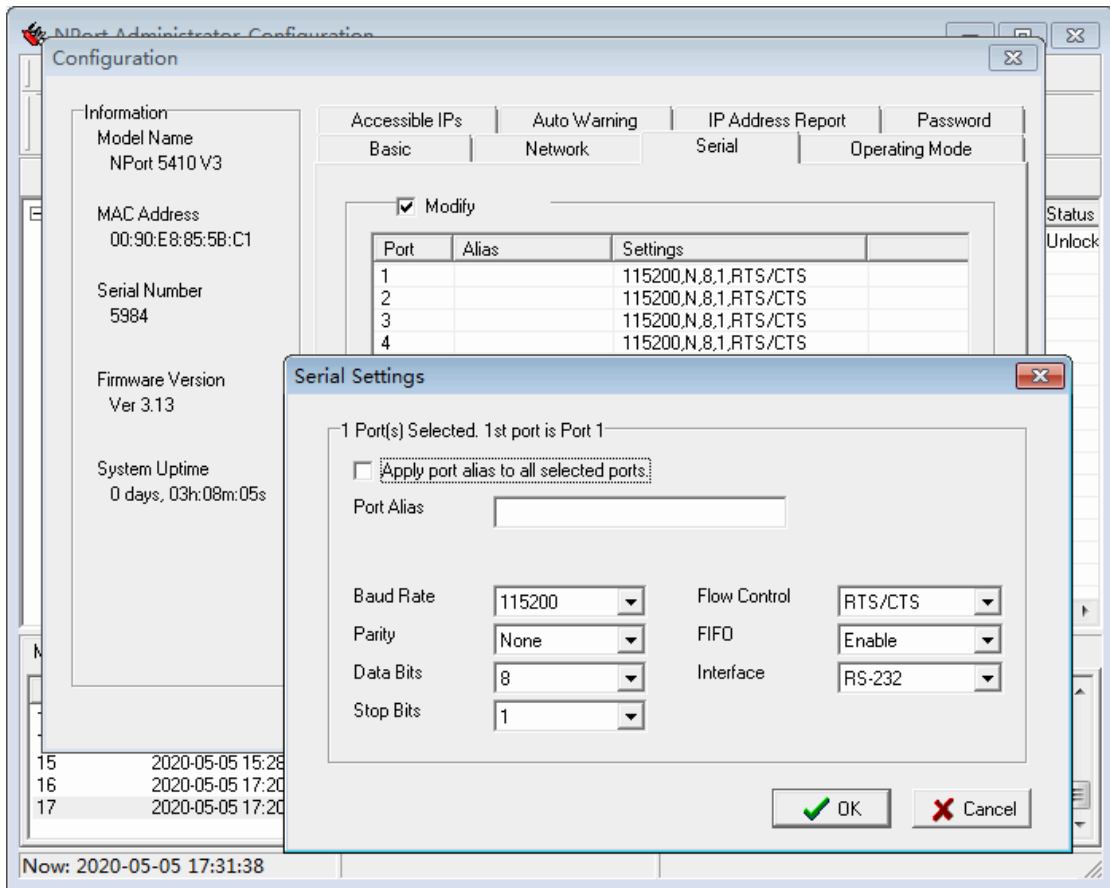
DHCP

IP

**DNS Server1 2 DNS**

Serial

Modify

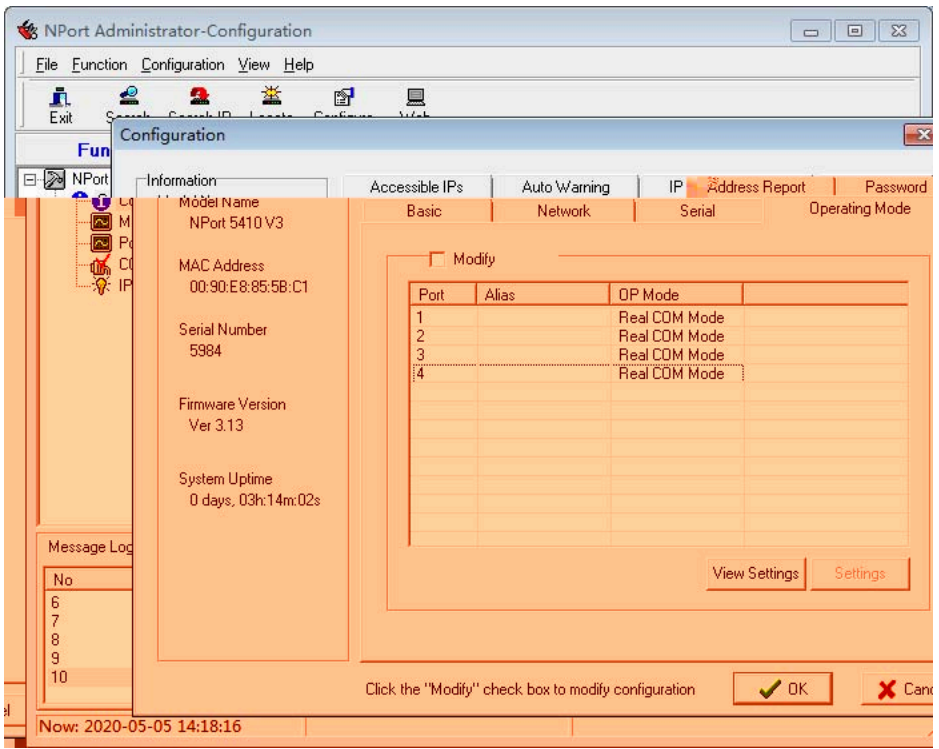


Baud Rate                      NPort5000    9600,115200bps  
 Parity  
 None  
 Even  
 Odd  
 Space  
 Mark  
 Data Bits  
 Stop Bits  
 Flow Control

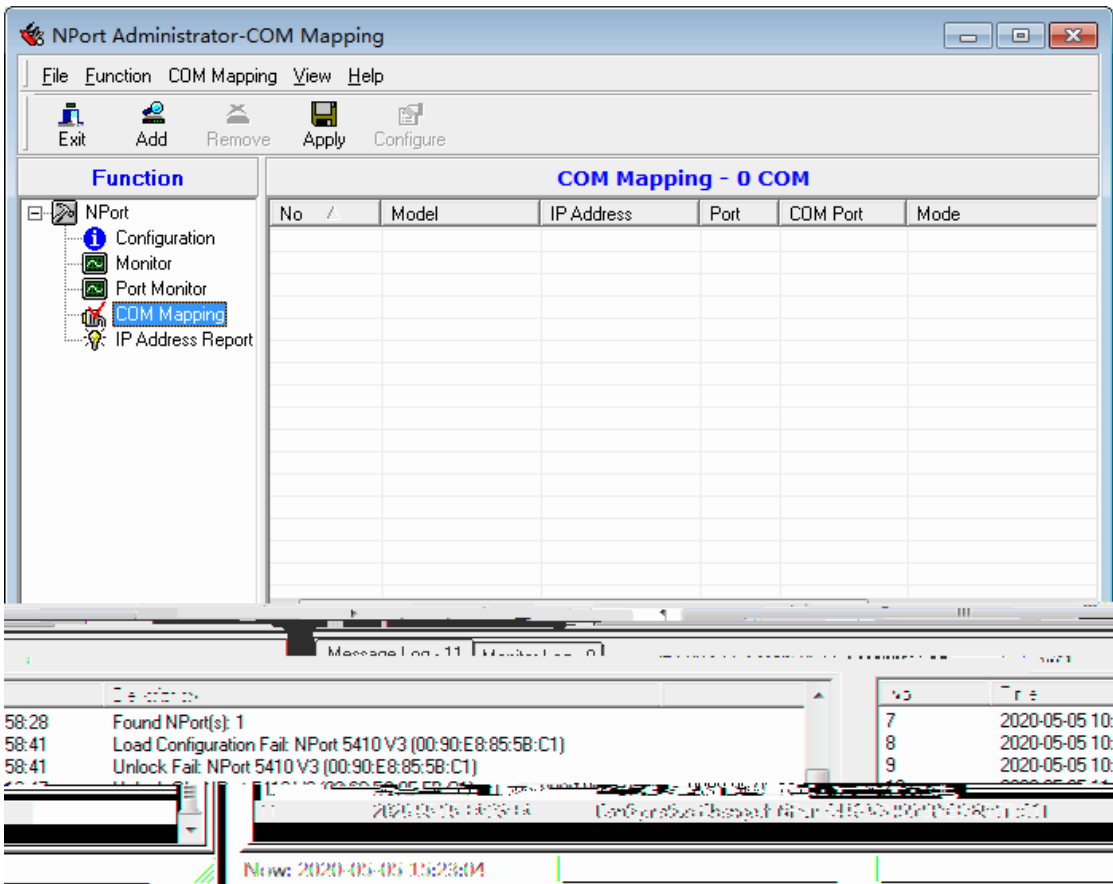
OK,

## RealCOM

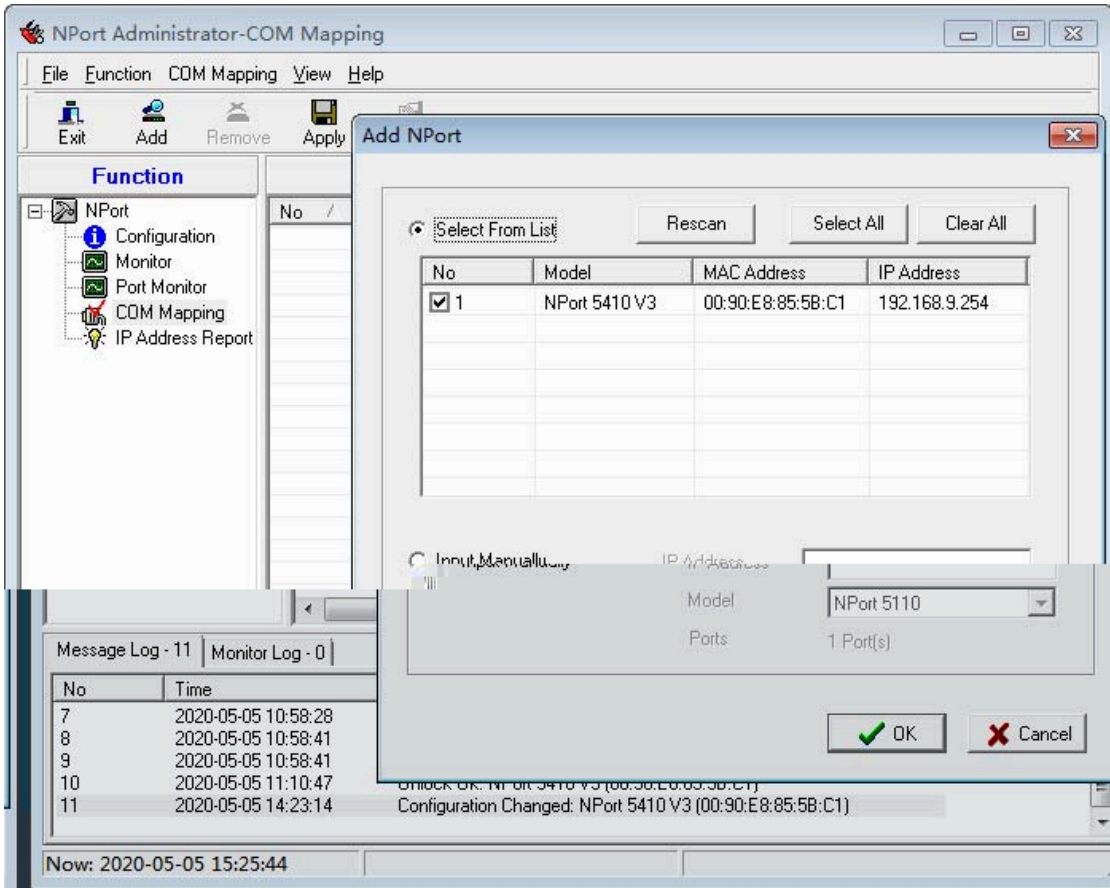
5410,                      Operating Mode    Real COM



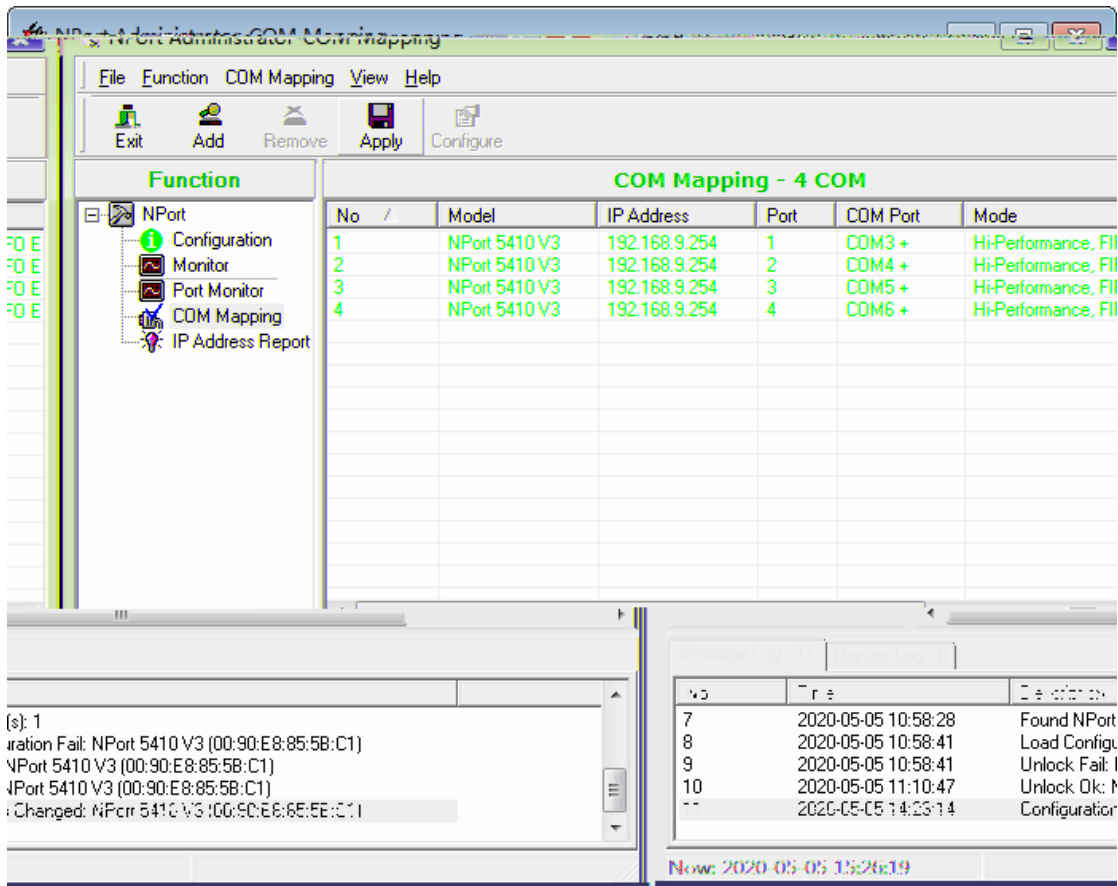
COM MAPPING



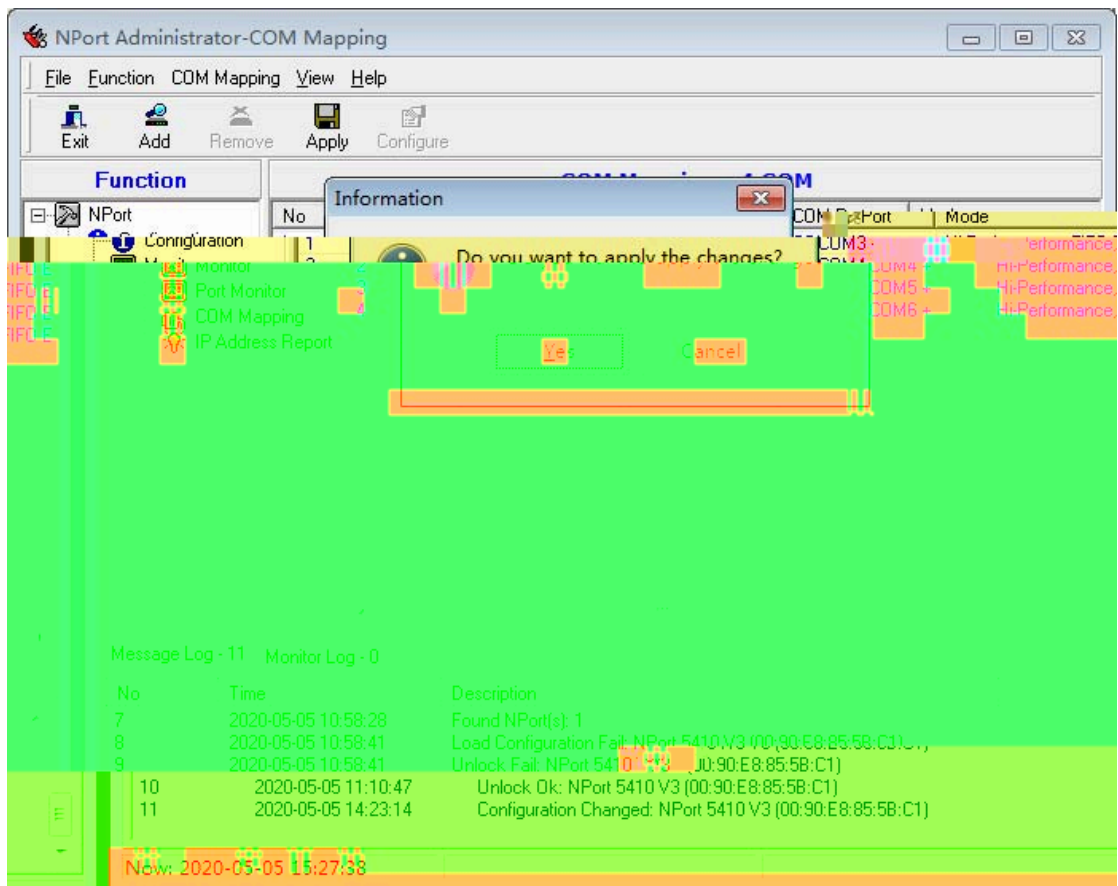
Add



“ OK”



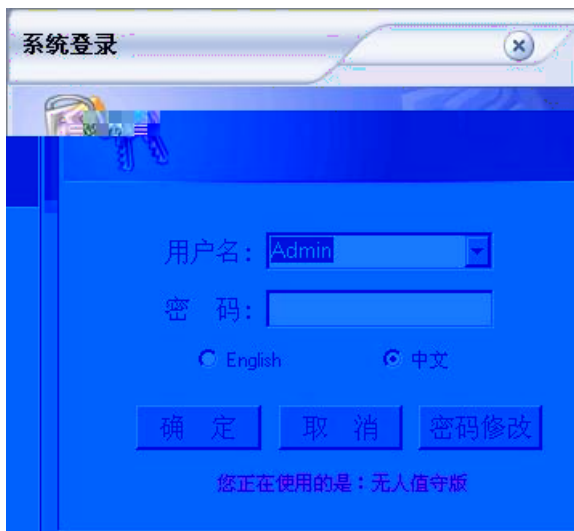
“ Apply”



“ YES” , “ OK”

#### 4 PLC

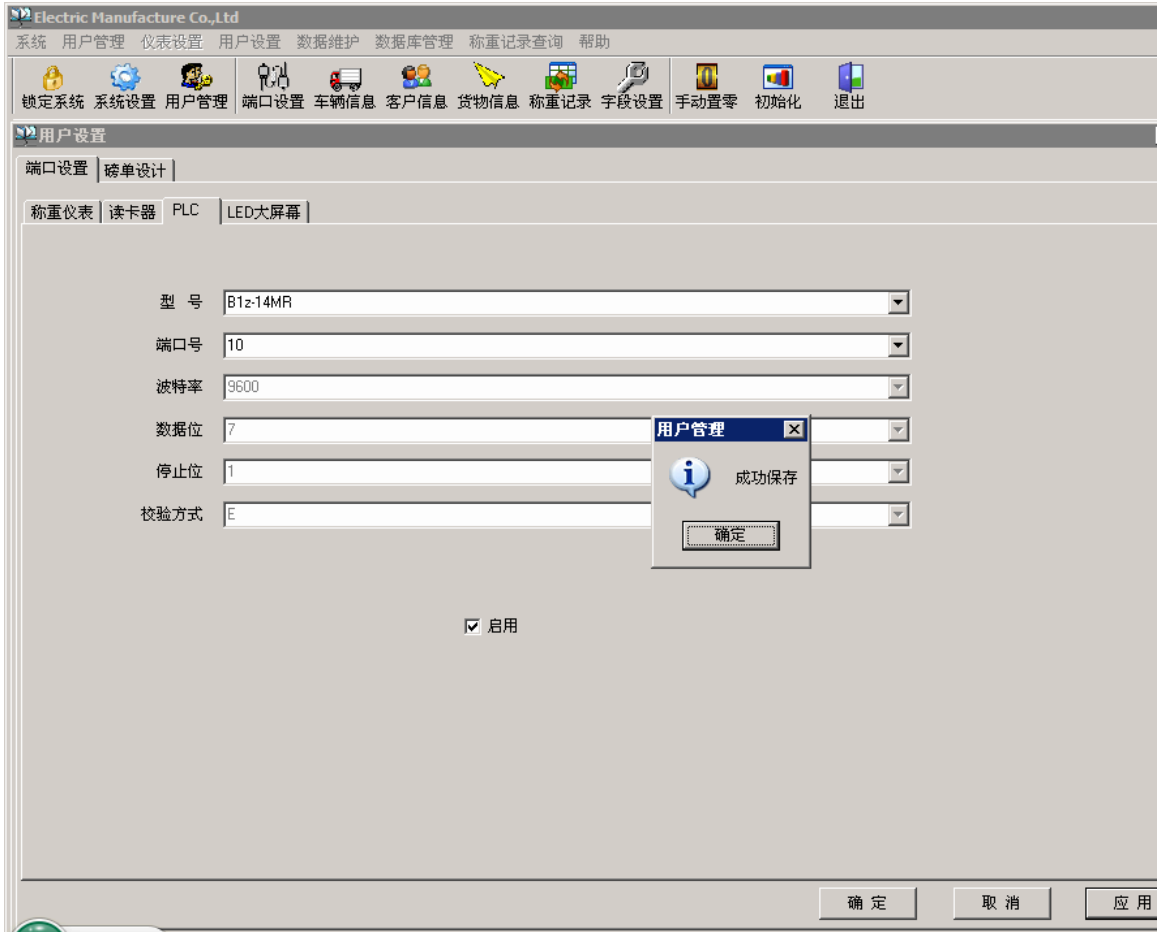
##### 1 Scale



Admin

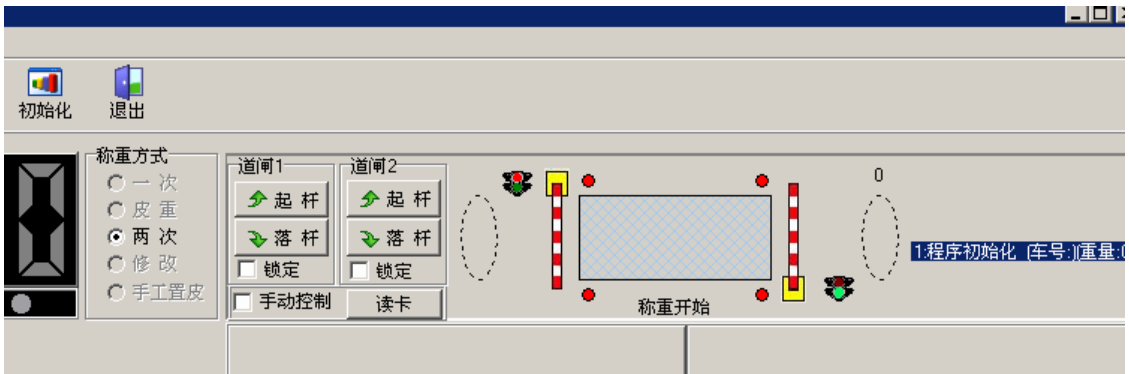
##### 2

##### PLC



3

PLC, PLC



5

PLC		
PLC	PLC	PLC      PLC
		USB , , , USB ,

