



# 浮吊称重系统 调试手册（简化版）



2013年1月版

宁波柯力传感科技股份有限公司

\*\*\*

\*\*\*

“

”

220V

UPS

UPS

EMC

UPS  
220V

10

□□□

1□

(

)

Profi bus

GB\_12602-

2009

±2.5%

2□

RS232 RS485

Profi bus

PLC

3□

—

—

—

1-

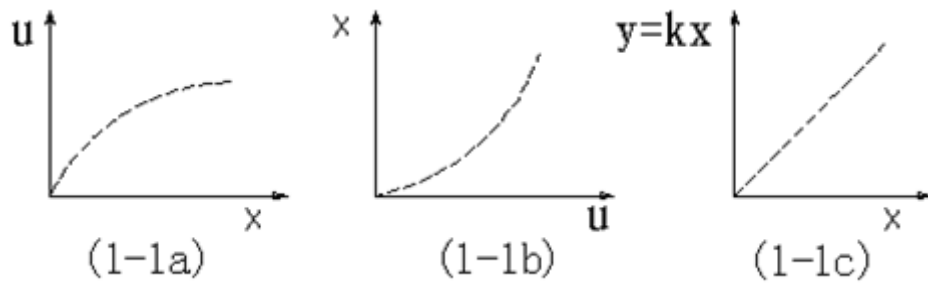
1(a)

1-

1 b

y x

1-1 C

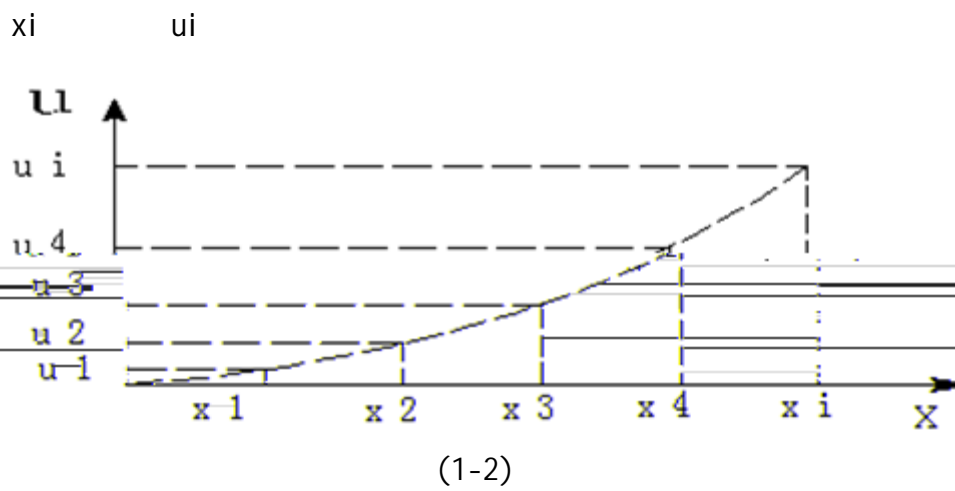


4□

4.1

1-

2



4.2

n

5

$X_i: X_1 X_2 X_3 X_4 X_5$

$U_i: U_1 U_2 U_3 U_4 U_5$

$$X_i = a_0 + a_1 u_i + a_2 u_i^2 + a_3 u_i^3 + \dots + a_n u_i^n$$

$$n=3$$

$$x_i(u_i) = a_0 + a_1 u_i + a_2 u_i^2 + a_3 u_i^3 \quad (1-1)$$

$$a_0 \quad a_1 \quad a_2 \quad a_3 \quad 1-$$

$$1 \quad x_i(u_i) \quad x_i$$

$$[x_i(u_i) - x_i]^2 = [(a_0 + a_1 u_i + a_2 u_i^2 + a_3 u_i^3) - x_i]^2 =$$

$$a_0 \quad a_1 \quad a_2 \quad a_3$$

$$X(u) = a_3 u^3 + a_2 u^2 + a_1 u + a_0 \quad (1-2)$$

$$u \quad x \quad u \quad 1-2$$

5□

5.1

5.2

5.3

5.4

5.5

6□

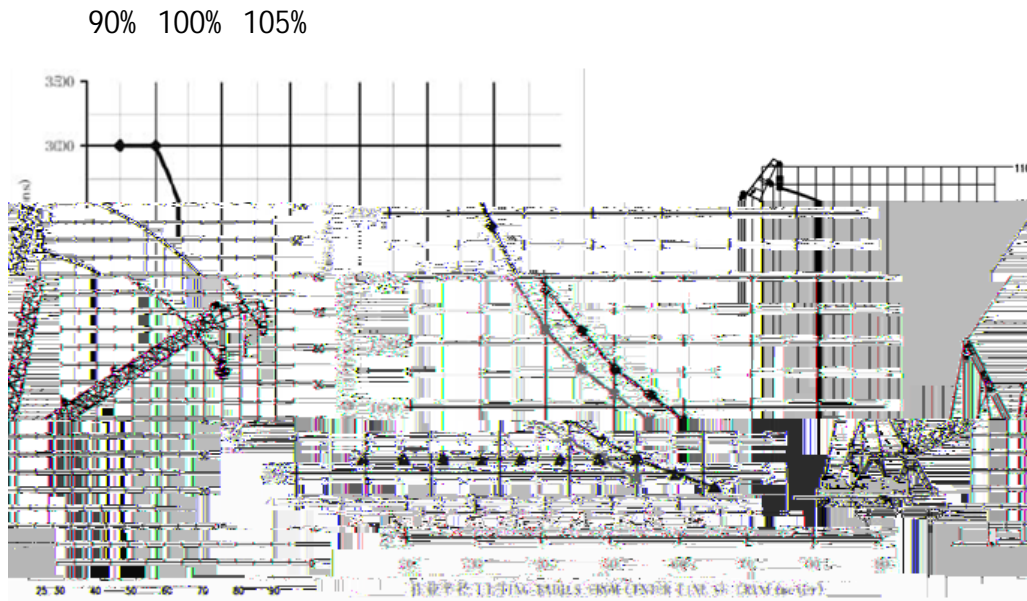
30

3000t

7

0

500t



7□

±2.5 F\*S

90

110

100

-20°C +60°C 90 RH

AC220V±15 50/60HZ

AC220V/7A

IP68

IP42

□□□

1□

1.1

RS485

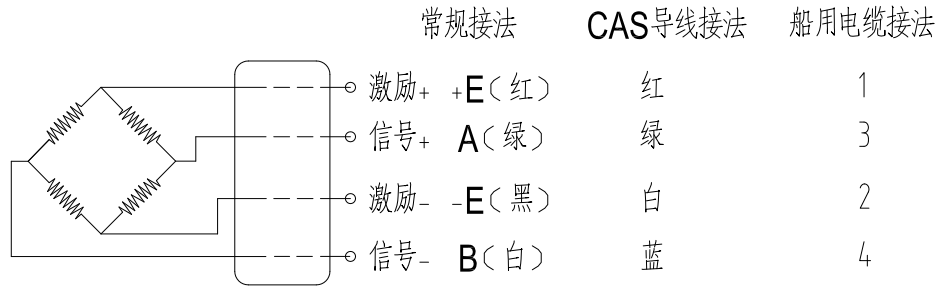
1.2

1		50Hz	10		IP68
2		9600bps	11		1~16
3	A/D	20	12		60000
4		$\pm 0.1\%F.S$	13		150%F.S
5		$<\pm 0.02\%F.S/10^{\circ}C$	14		-30°C~ +70°C
6		$<\pm 0.02\%F.S/10^{\circ}C$	15	30mi n	$<\pm 0.02\% F.S$
7		9—12V DC	16		25V DC
8		$<\pm 0.02\%F.S/10^{\circ}C$	17		1200
9		$<\pm 0.02\%F.S$			

1.3



1.4



2□

RS485                      RS232  
 AD                      RS232

2.1

D02E ADAM4520

2.2

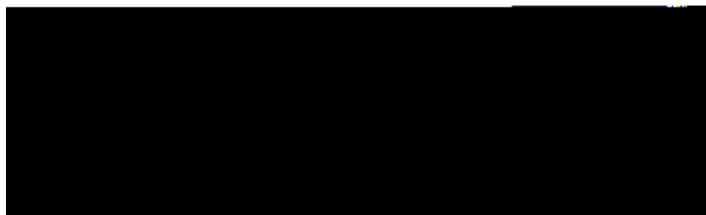
±150mV ±500mV

±1V ±5V ±10V

±20mA (4017                      125                      )

RS485

——2.6 ADAM 4000/5000 Utility



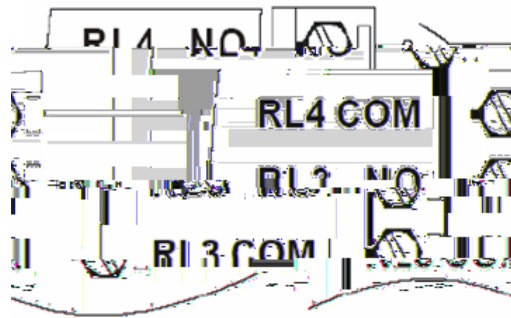
2.3

ADAM-4068                      8                      4 A                      4 C                      Modbus

AC 125V@0.6A 250V@0.3A  
 DC: 30V@2A 110V@0.6A

2.3.1

A



2.3.2

C



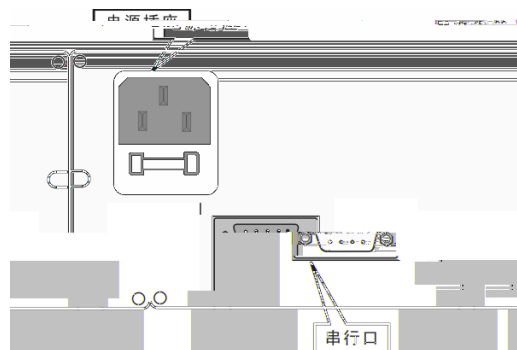
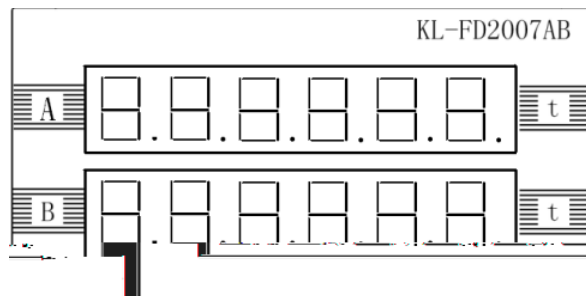
2.4

KL-

FD2007AB

170x85x100mm

150x75mm



2.5 Profi bus

PROFI BUS-DP  
12Mbit/s

128

PROFI BUS

3 126

RS232/RS485

RS232/RS485 /

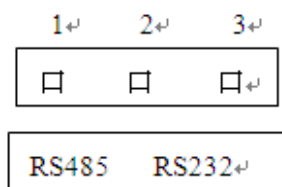
2.5.1

1	+5V	5	
2	232 TXD	RS232	RXD
3	232 RXD	RS232	TXD
4	485-	RS485	B
5	485+	RS485	A
6	COM		

2.5.2

	+24V	24
	0V	24
	EARTH	

2.5.3 RS232 RS485 :



2.5.4

RS232/RS485

"

"

"

"

RS232-RS485

Profi bus

## 2.6 ADAM 4000/5000 Utility

ADAM 4000/5000

Utility

ADAM

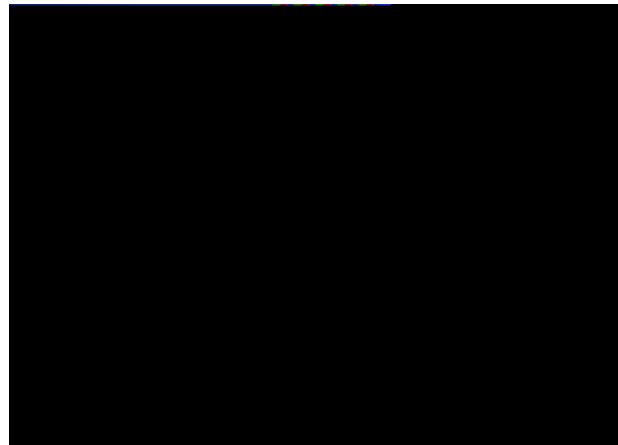
[www.advantech.com.cn](http://www.advantech.com.cn)

1

COM1

COM2

Search

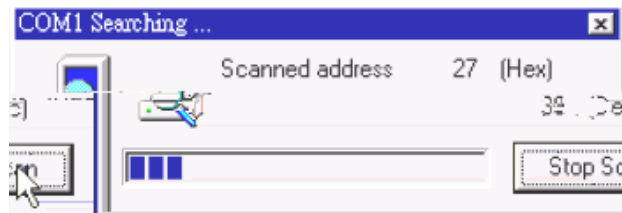


2

“search installed modules”

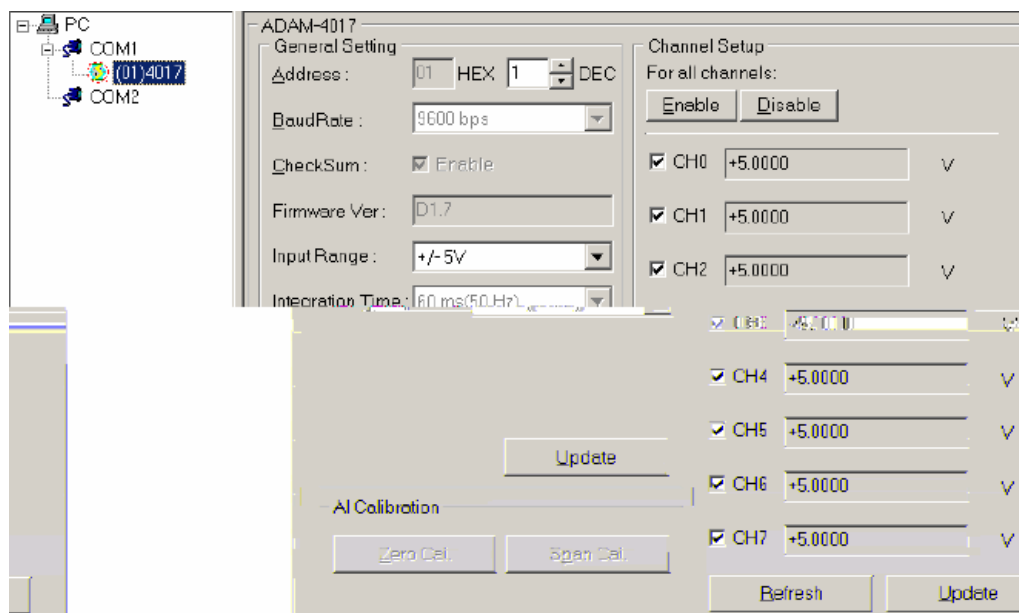
0-

255 RS485



3

/



3□

### 3.1

BIOS “ ”

1 128 del BIOS

2 “INTEGRATED PHRI PHERALS SETUP”

3 “PWRON After PWR-Fail” “On ”

4 UPS

UPS

5

BIOS “ POWER MANAGENT SETUP” “ Restore ac power  
loss” “ Enable”

BIOS “ POWER MANAGENT SETUP” “ PM Control by APM” “ No”

BIOS

### 3.2

1 GHOST E GHOST G

HOST

2 GHOST DOS Win

dows GHOST

3

4

5

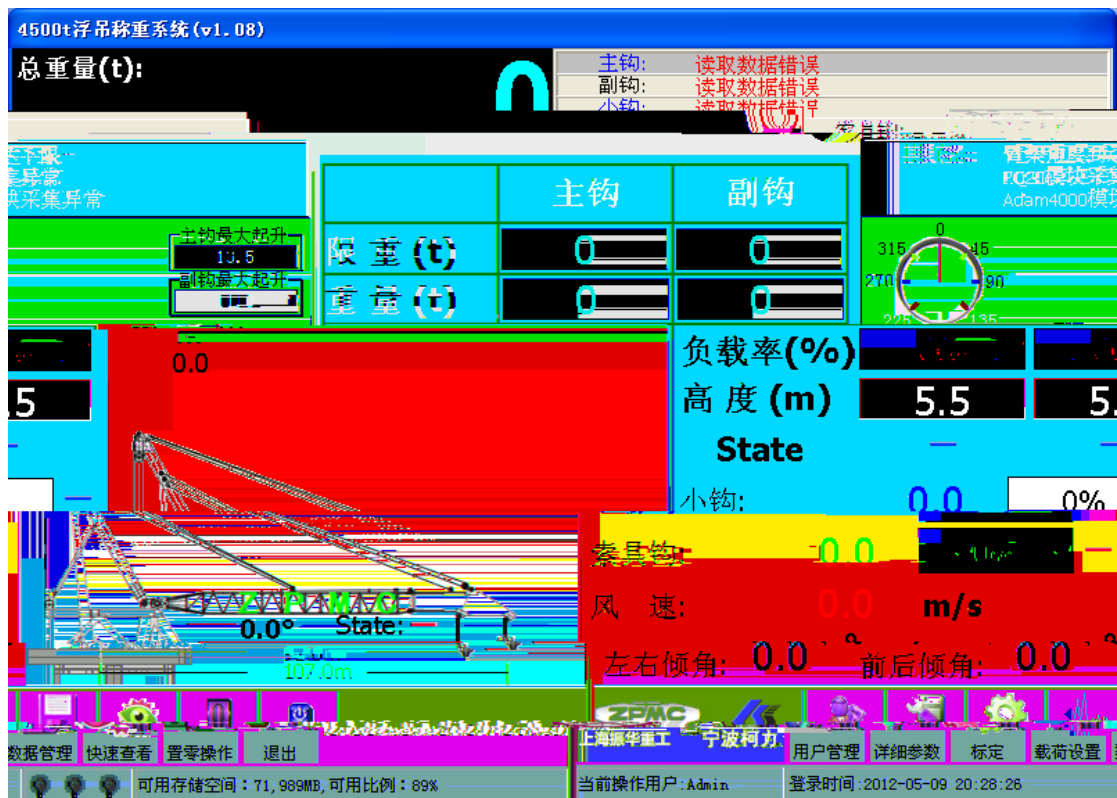
GHOST

4□

RS232

PLC

PLC PLC



5□  
5.1

0-90

	DC12V DC24V DC8~28V( 40V)		360°
	±30° ±45° 0 90°( ±90° )		
	0 5V 1 5V ±5V 4 20mA /		
	±0.01°( )		±0.05°
	homotaxil		0.01%FS/°C
	-25°C 70°C -40°C 110°C		IP65/IP66
	( )		
	-30°C 85°C -45°C 120°C		

5.2

4-

20mA

X Y

12mA

4-12

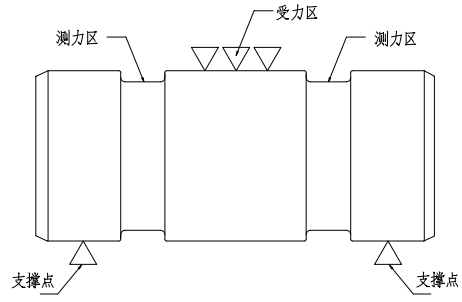
mA

12-20 mA

	±5° ±10° ±20°( ±20° )		
	0 5V 1 5V ±5V 4 20mA /		
	±0.005°( )		±0.01°
	(5 )		

□□□

1



KL-

TC1

“ ”

h6

F7

2

0 55°C

85

3.5

!!

2.1

30mm

100mm

2.2

200mm

2.3

2.4

2.5

2.6

2.7

3.3

3.4

3.5

3.6

3.7

3.8

3.9 KL-

TC1

4

4.1 AC220V

4.2

PLC

COM

4.3

PLC

4.4

4.5

DC24V

0V

OV 4 X Y OV

4.6  
Profi bus

DP

DP

ON

Profi bus

DP

RS232

4.7

RS232

2-

4

6

RS232

D

4.8

DATA+

DATA- )

4.9

UPS

UPS

5

RS232

SAVE

CLOSE( )

5.1

“ ”

RS232

COM

## 5.2 PLC Profi bus

PLC

0

DP

RS232-

RS485

Profi bus

## 5.3

	t									
	0	200	400	600	800					
	0	200	300							

## 5.4

5.4.1

5.4.2

0.3%

5.4.3

5.4.4

5.4.5

5.4.6

5.4.7

5.4.8

## 5.5

1200t

600t