

# 8000t

1

1.1

1.2 Adam5000E

1.3 PQ20

1.4 Robust Panel PC

1.5 APC Smart-UPS

1.6

2

2.1

2.2

2.3

2.4

2.5

2.6

2.7

2.8

2.9

2.10

2.11

2.12

2.13

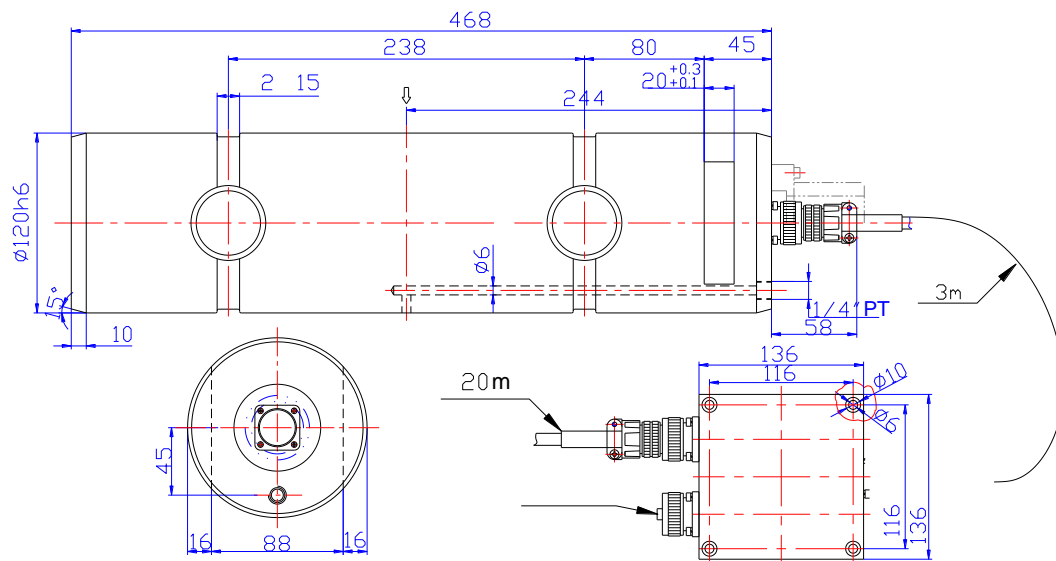
# Chapter 1

## 1.1

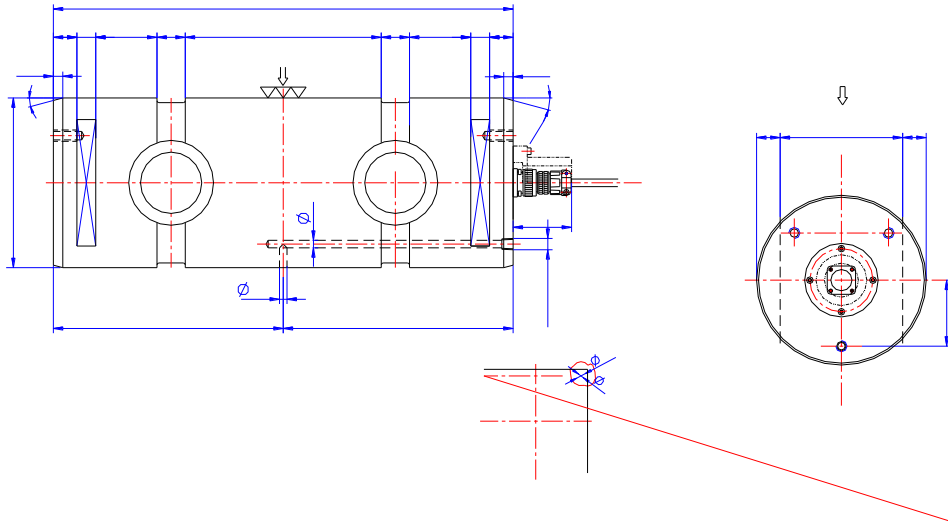
No1~No4 MainHoist	XZBEU-ADSS 100t			
No5~No8 MainHoist	XZBEU-ADSS 150t			
	XZBEU-ADSS 35t			
	XZBEUB-ADSS 150t			

### 1.1.1

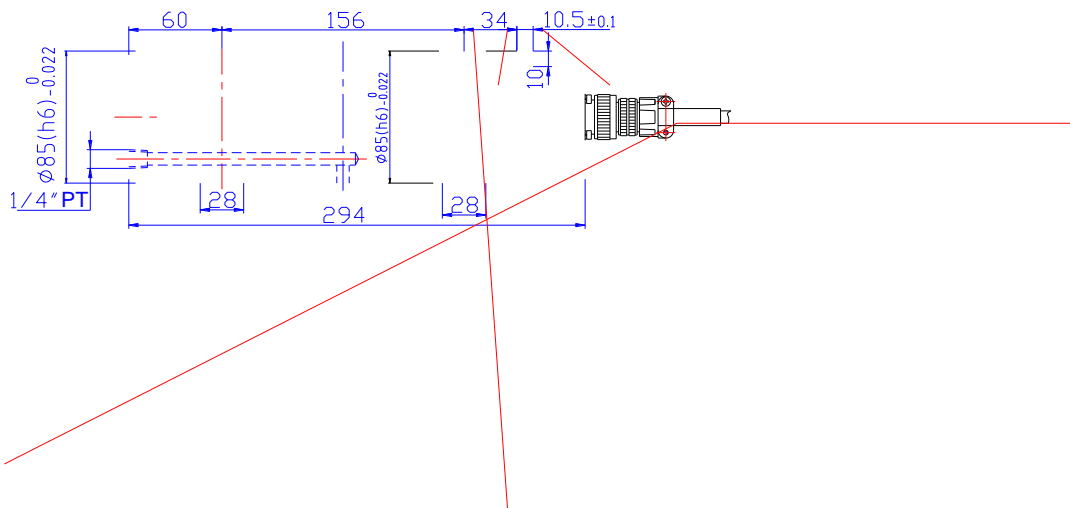
#### 1) No1~No4 MainHoist



#### 2) No5~No8 MainHoist



3)



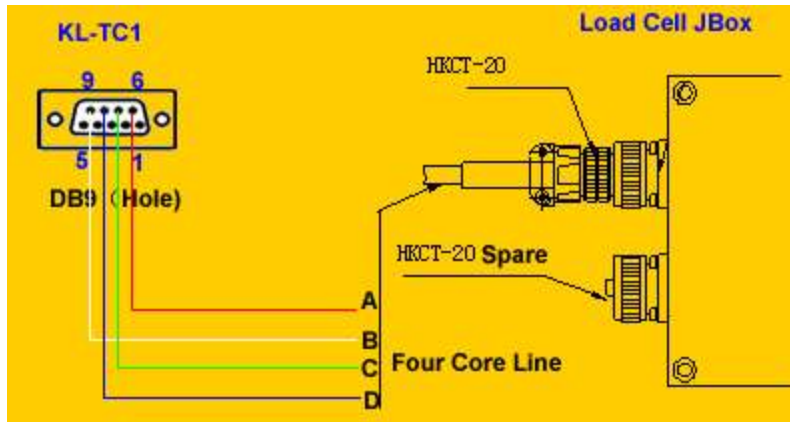
4) Boom



1.1.2

A( ) B( ) KL-TC1

DB9 6,9,7,8



Switch to address modification by pressing the key of Address modification The indicator shows

**Mode 6 Modify address**

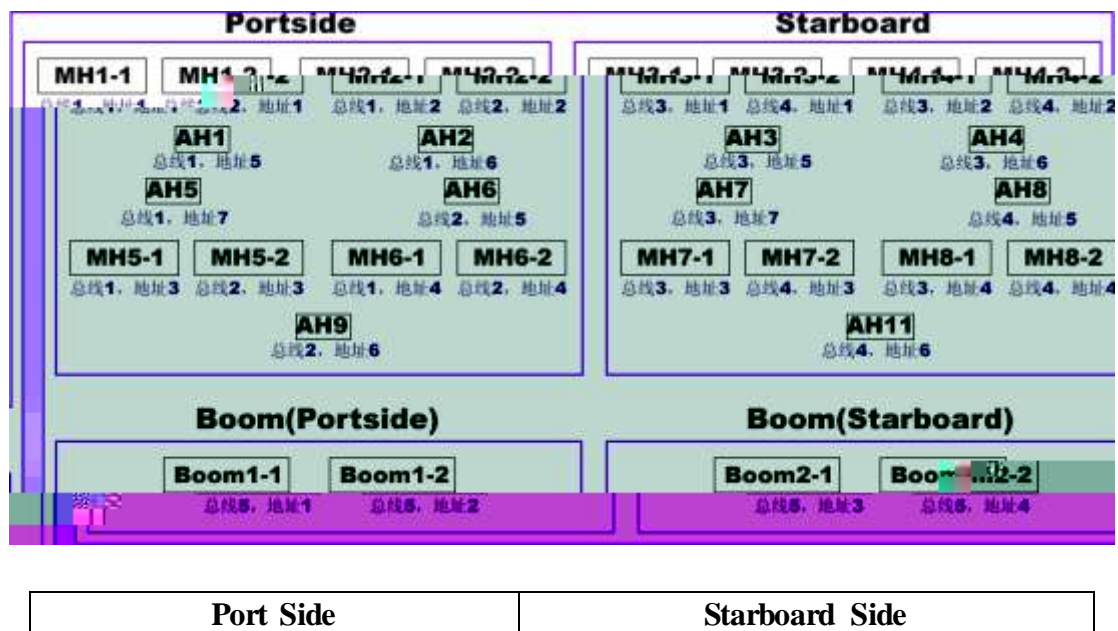
current adr: [ 01 ]

Set New adr:[ 02 ]

EXIT:set PAGE:mode

Press digital keys to input new address and press Enter to confirm or press Cancel to exit. If modification is successful, the new address will be displayed on current address column. After pressing Input or else it will show NO

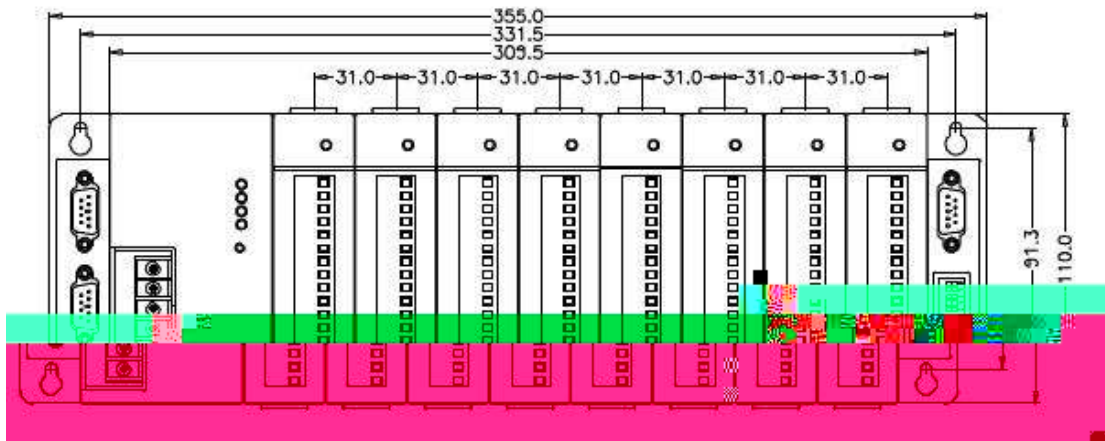
1.1.3



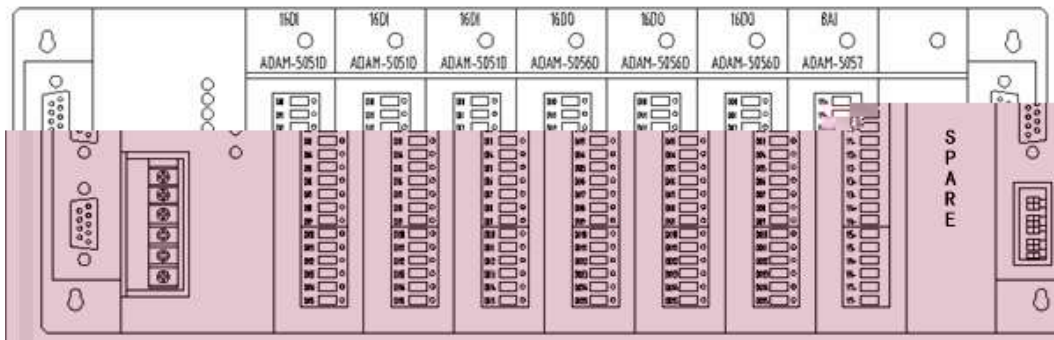
1	MainHook1-1	1	3	MainHook3-1	1
	MainHook2-1	2		MainHook4-1	2
	MainHook5-1	3		MainHook7-1	3
	MainHook6-1	4		MainHook8-1	4
	AuxHook1	5		AuxHook3	5
	AuxHook2	6		AuxHook4	6
	AuxHook5	7		AuxHook7	7
2	MainHook1-2	1	4	MainHook3-2	1
	MainHook2-2	2		MainHook4-2	2
	MainHook5-2	3		MainHook7-2	3
	MainHook6-2	4		MainHook8-2	4
	AuxHook6	5		AuxHook8	
	AuxHook9	6		AuxHook11	


1.2 Adam5000E

1.2.1 Appearance and Dimensions unit mm



1.2.2



1.2.3 I/O

1 5051D

DI0	MH1 Up	DI0	AH1 Up	DI0	AH9 Up
DI1	MH1 Down	DI1	AH1 Down	DI1	AH9 Down
DI2	MH2 Up	DI2	AH2 Up	DI2	Spare(AH10 Up)
DI3	MH2 Down	DI3	AH2 Down	DI3	Spare(AH10 Down)

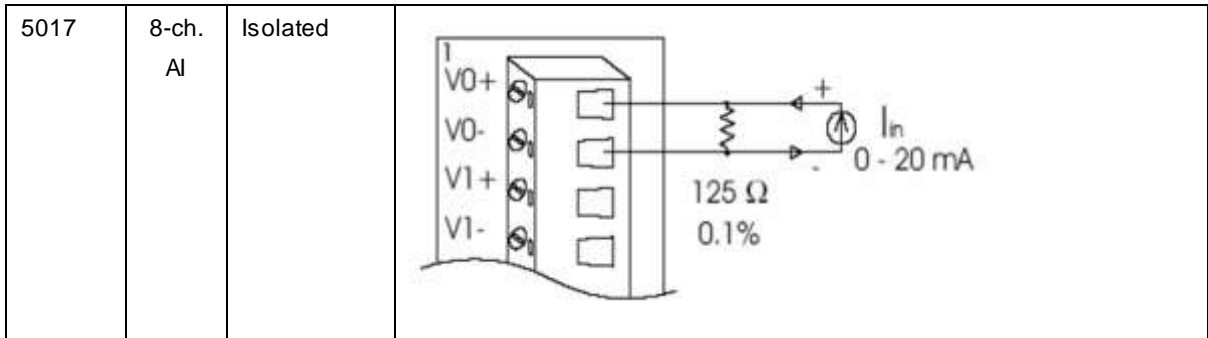
---

DI4 MH3 Up

DI4 AH3 Up

DI4 AH11 Up



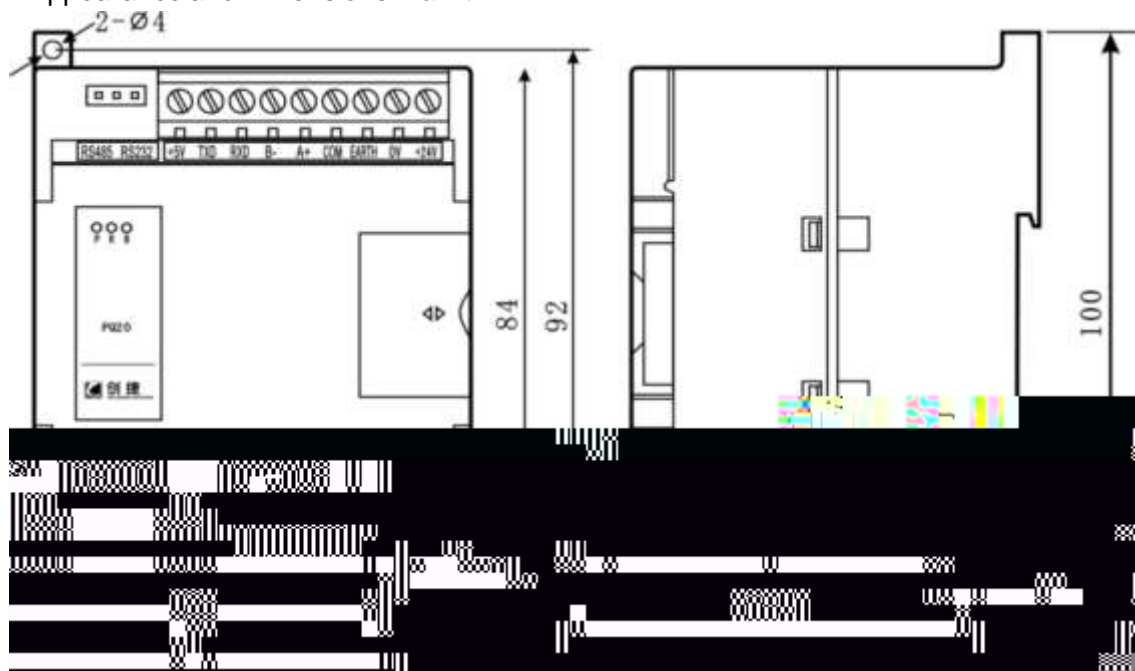


Adam-5000E Robust Panel PC

NO.	Adam-5000E	Adam-4520	Remark
1	+Vs	(R)+Vs	24VDC
2	GND	(B)GND 10	0VDC
3	DATA+	DATA+	
4	DATA-	DATA-	

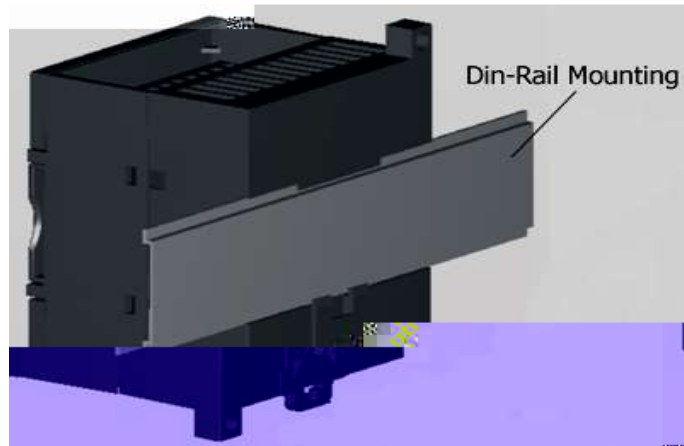
### 1.3 PQ20

#### 1.3.1 Appearance and Dimensions unit mm

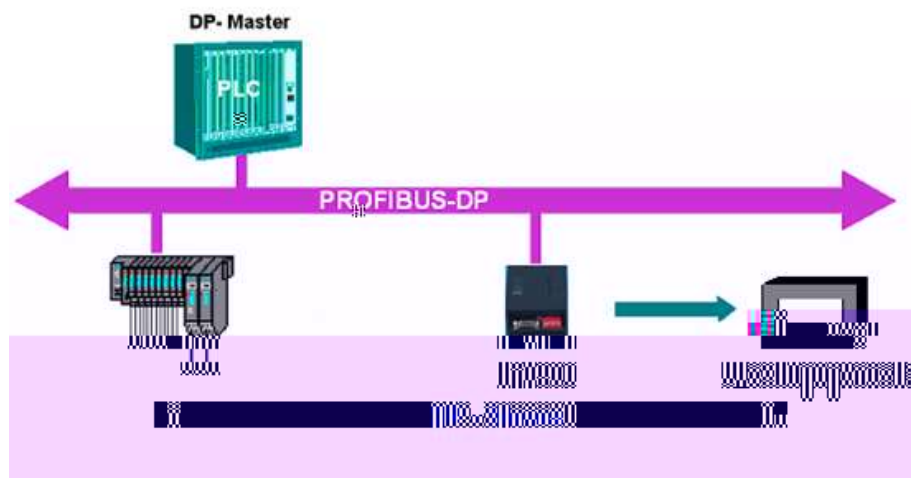


#### 1.3.2 Placement Options

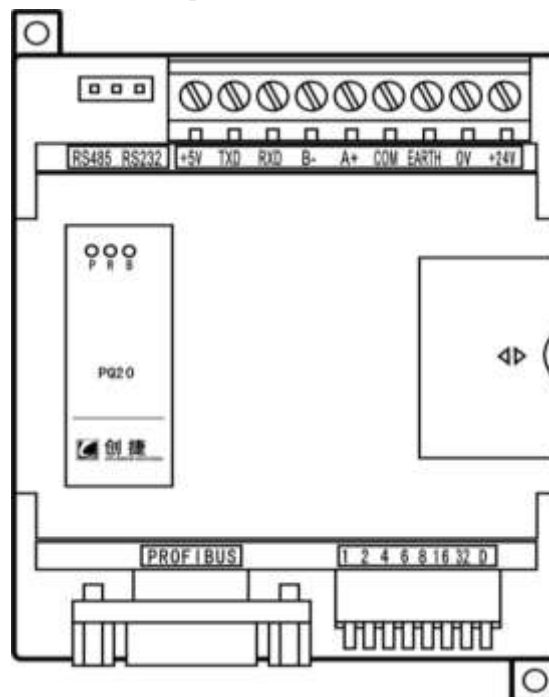
As follows



The entire system operating environment:



### 1.3.3 PQ20 indicator and terminal description



## PQ20 Top View

Indicator signification:

**P** Power indicator (Green)

Labeling	signification	
	Bright	Extinguished
P	module power normal	power off or module power damage

**R** Communication indicator (Green)

Labeling	signification	
	flashing	no flashing
R	Bridge module run normally	Bridging modules run abnormally

**B** PROFIBUS communication indicator (Red)

Labeling	signification	
	Bright	Extinguished
B	PROFIBUS communication abnormal	PROFIBUS communication normal

Modules power on at the beginning, three of the bright lights or Extinguished state as follows:

P, R, B lights are bright when power on; in 0.5 Second R light is off, in 6 Second B light is off if the module and PROFIBUS master properly connected, and R light flashing. Meanwhile, PROFIBUS master red LED is extinguished.

### 1.3.4 Top terminals

communication terminal

Pin NO.	Symbol	Signification
1	+5V	Power: +5V
2	232 TXD	RS232 send signals( connect forward RXD)
3	232 RXD	RS232 receive signals( connect forward TXD)
4	485-	RS485 differential signal B
5	485+	RS485 differential signal A
6	COM	Public terminal

power terminal

Pin NO.	Symbol	Signification
	+24V	Power: +24V
	0V	Power: -24V
	EARTH	Grounding terminal

RS232 RS485 Select terminal

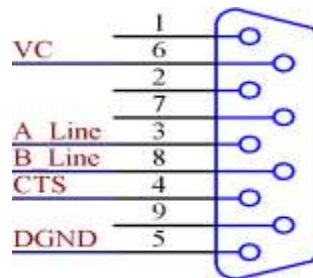
Link 1&2 to select RS485 communication mode, Link 2&3 to select RS232 communication mode.

### 1.3.5 Bottom terminals

#### 1) PROFIBUS interface

User system use plug DB9 for leading PROFIBUS interface, recommended PROFIBUS standards lead the way

Plug DB9 outer metal parts reliable grounding. DB9 Standard as follow figure:



U





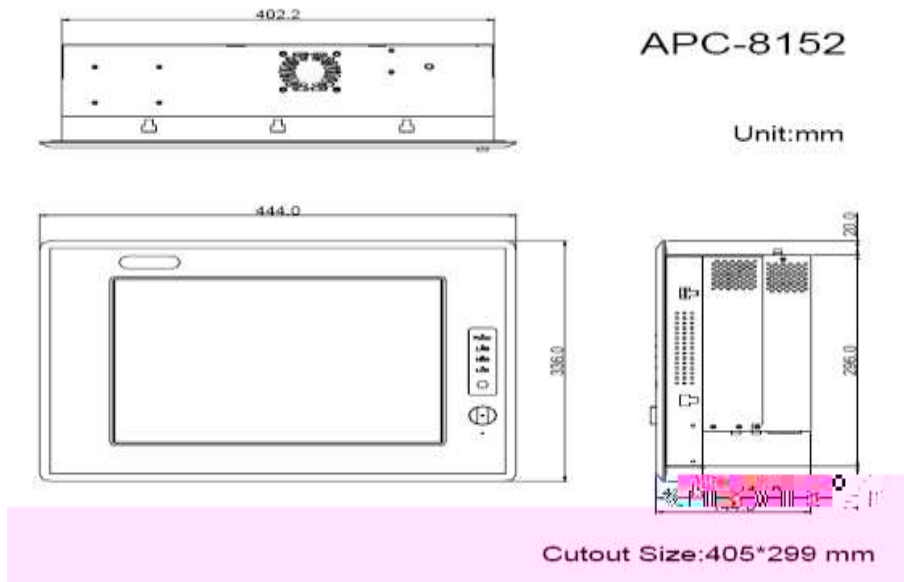






**Model: APC-8152**

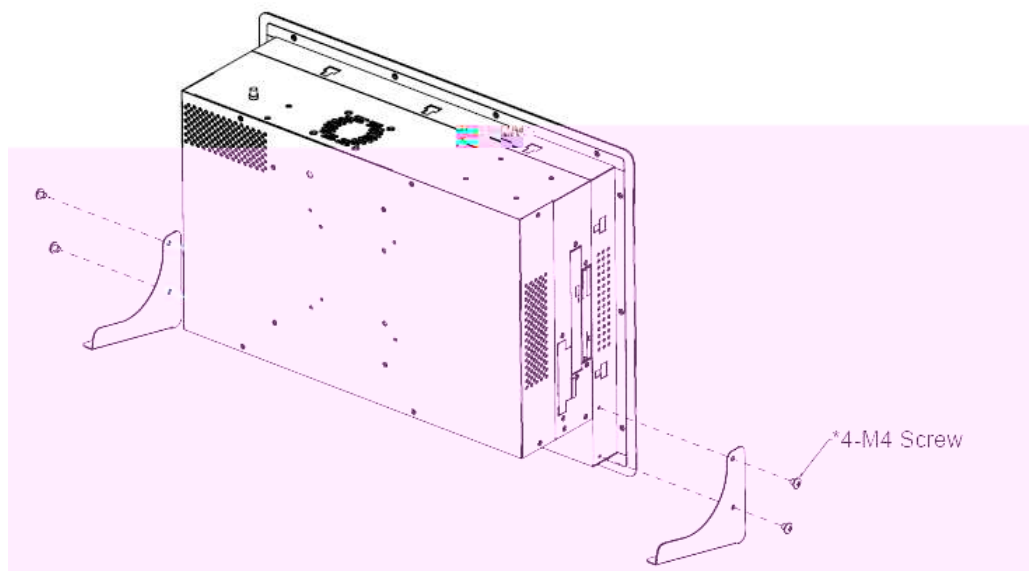
### 1.4.1 Dimension



### 1.4.2 Easy Stand Installation

-shape easy stands come with the product. Refer to the following instructions to install.

1)Fasten the L-shape easy stands with the screws on both sides of the monitor. See the drawing below:



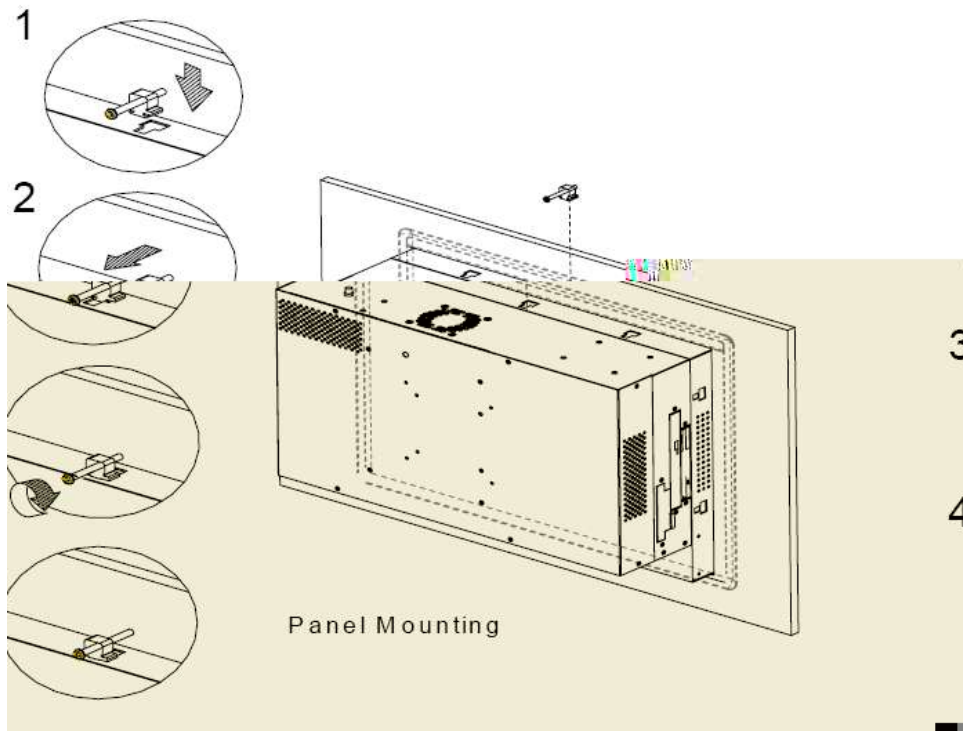
Some screw sets will come with the product for user to mount the monitor on the wall. See the steps below for installing.

Step 1: Bore the screw into the screw nut.

Step 2: Locate the screw set into the hole around the monitor as the right illustration and pull it back to lock the screw set on the hole.

Step 3: Turn the screw around to make it tight until it is closed to the wall.

Step 4:

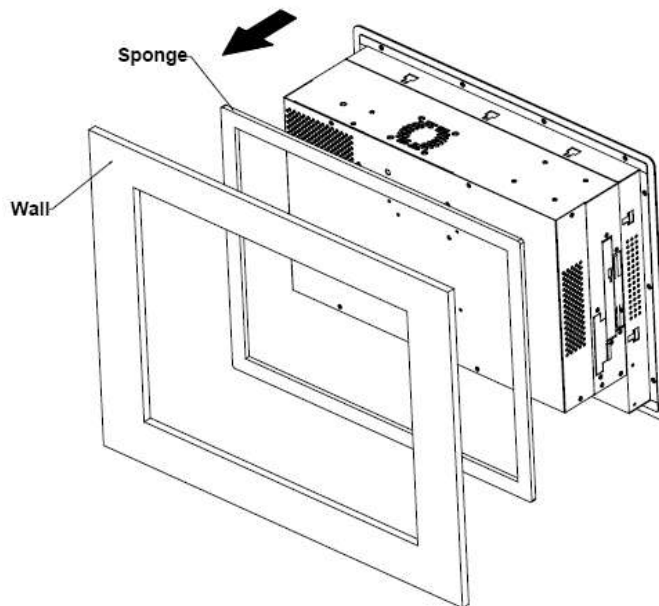


## 2) Waterproof sponge Installation

The following illustration shows you how to lodge the waterproof sponge in the back of the monitor set.

A) Lodge the Sponge in the back of the monitor set

B) Locate the monitor set on the wall



1.6

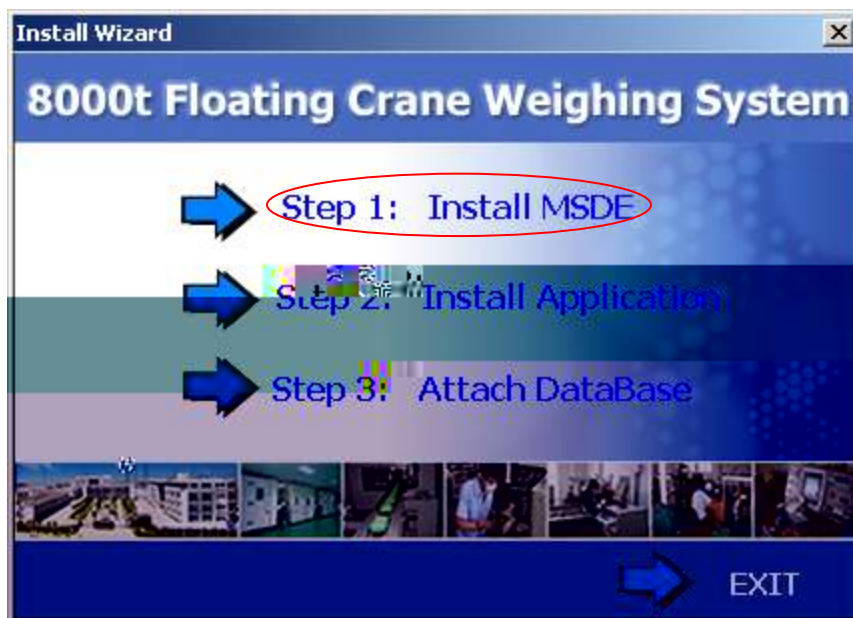
## Chapter 2

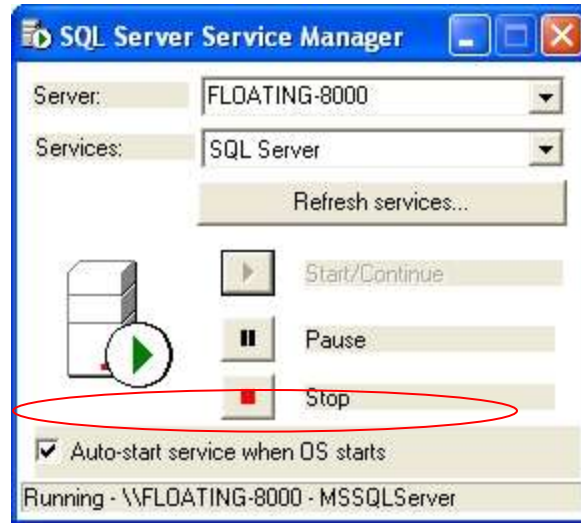
---

2.1

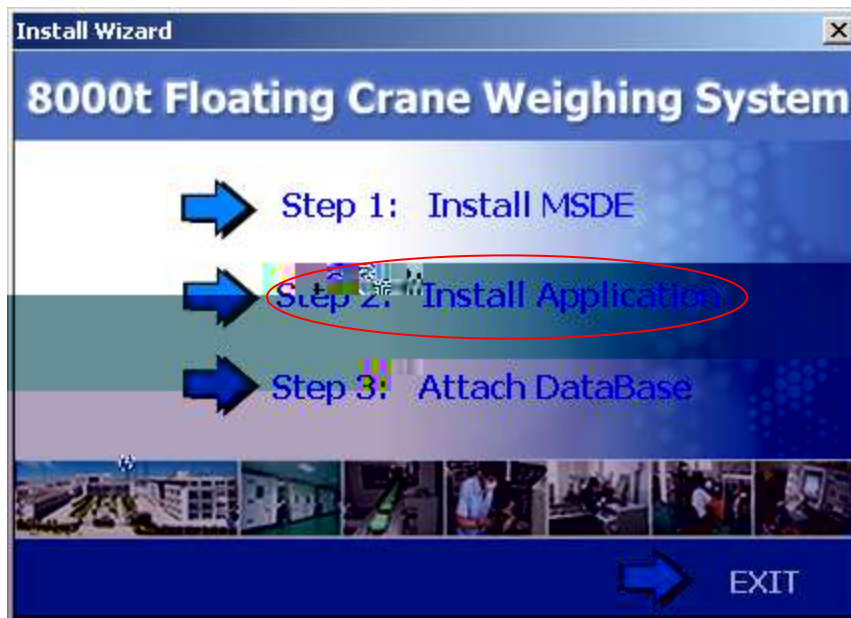
2.2

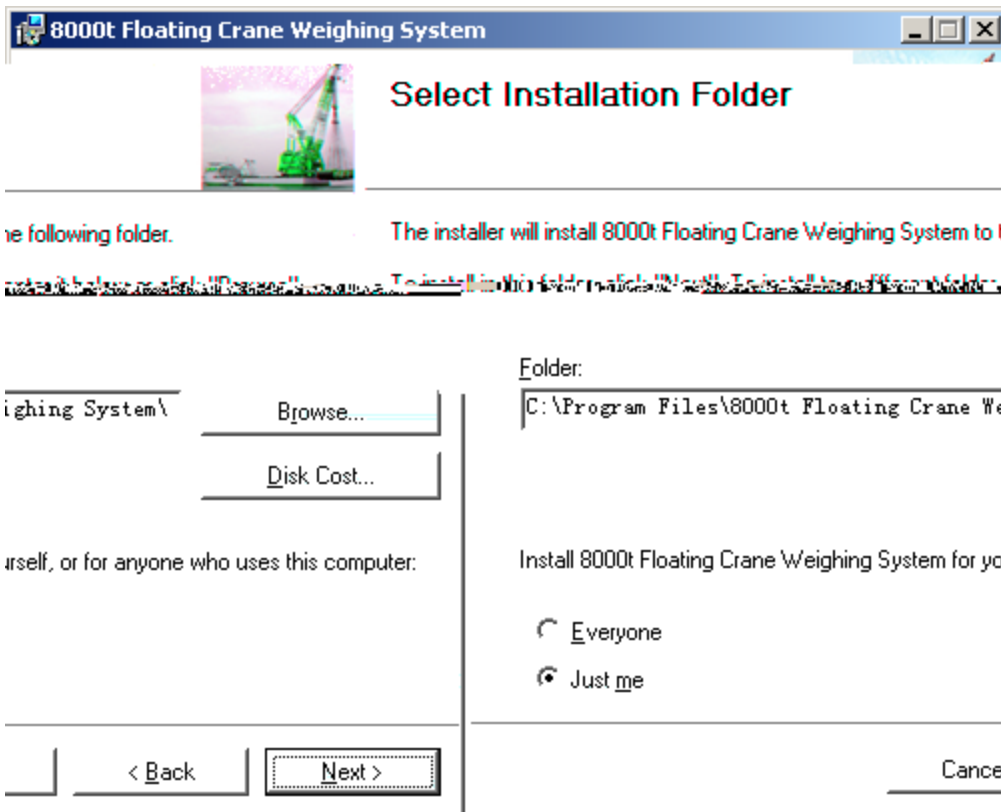
2.2.1 MSDE

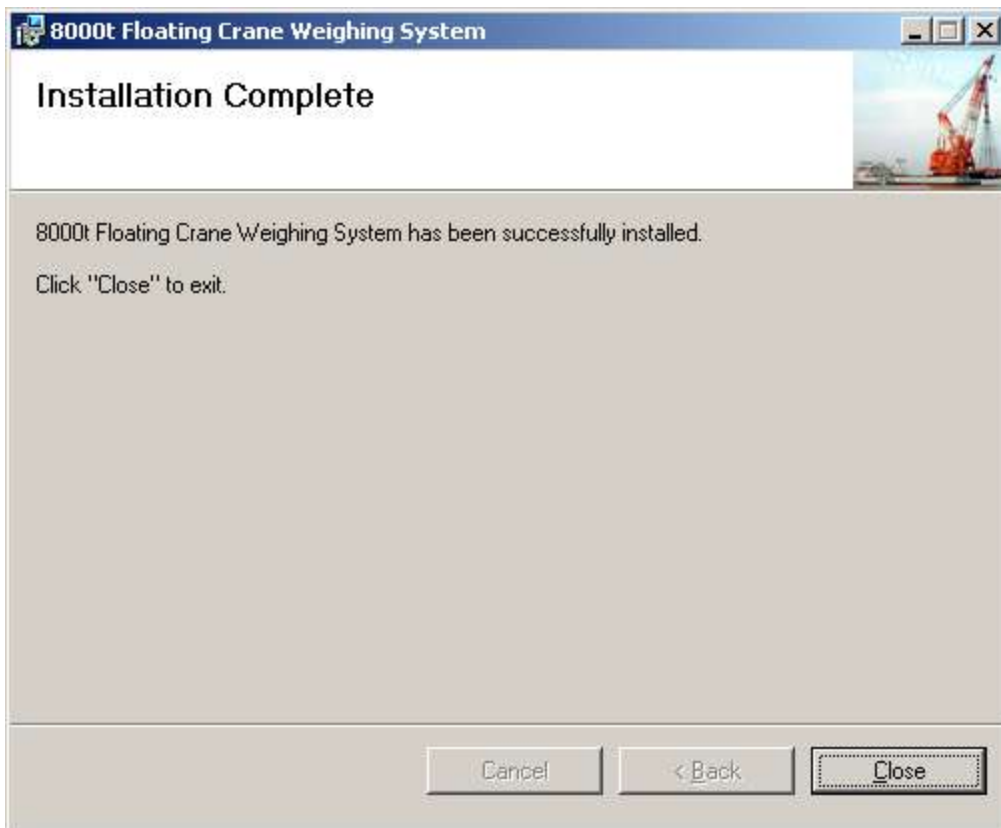
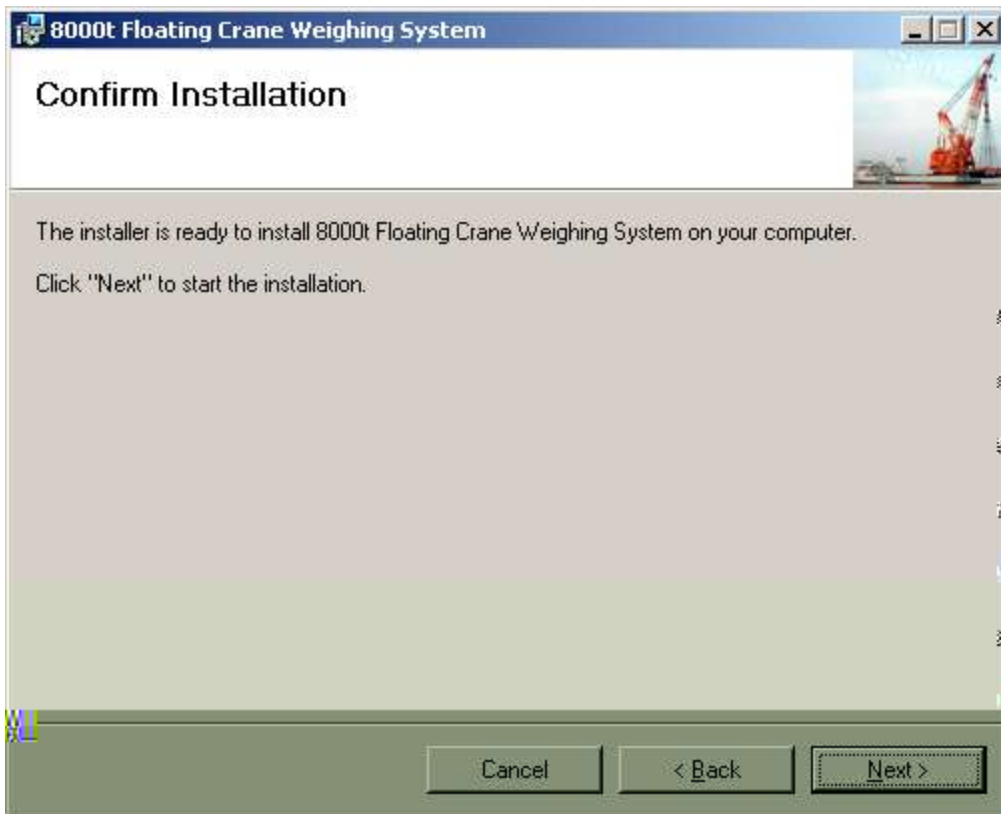




2.2.2

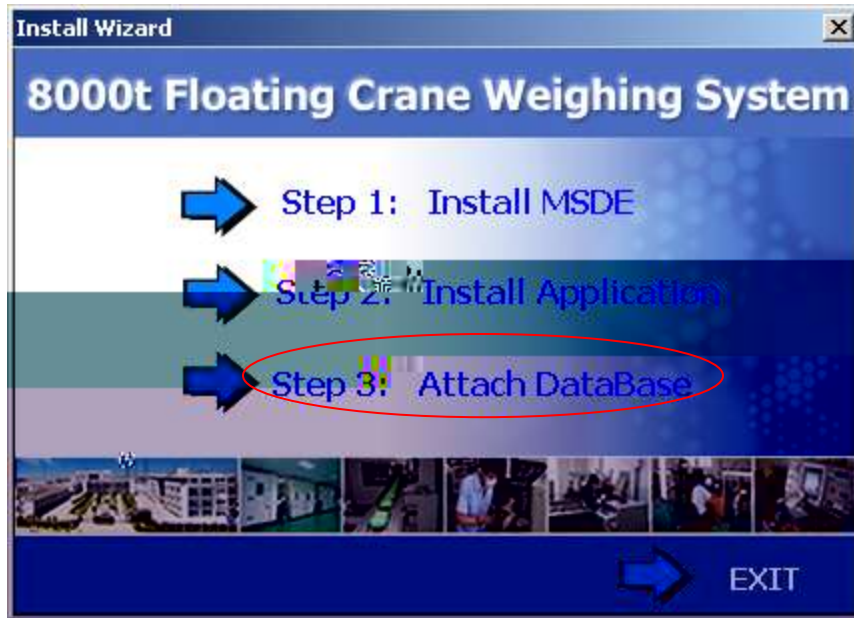








2.2.3



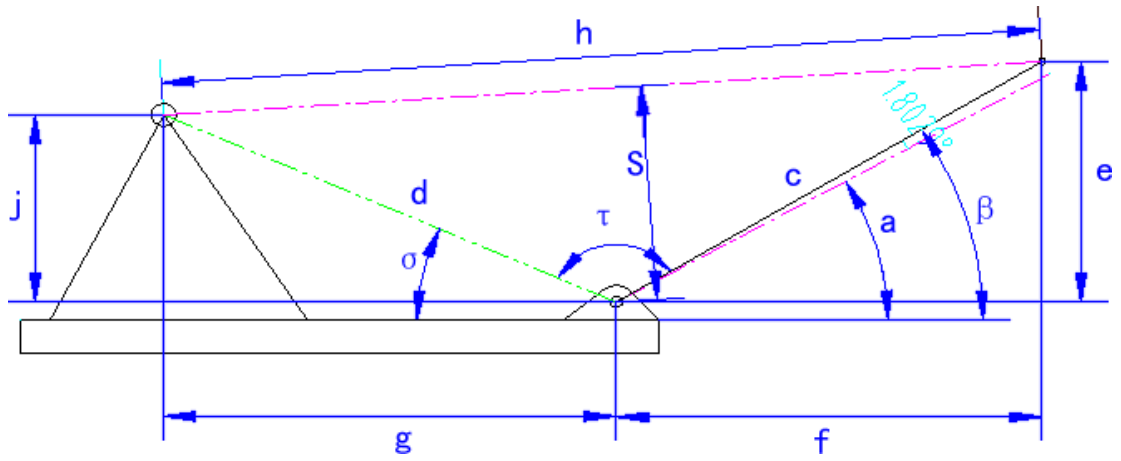
2.4

=1#+2#+5#+6#

LoadRate1=100\*( /S  
umLimit1)

SumLimit

---



2.6

1)

Range	K1	K2
0~300t	K11	K21
300~600t	K12	K22
600~900t	K13	K23

900t	K14	K24
------	-----	-----

- 2)  $t$ , : (Delayed time)
- 3)  $w1$ , :Ton/m (Rope weight in every single unit)
- 4)  $F_m$  Ton (Load cell value)
- 5)  $F_c$  Ton (Compensation with rope weight)
- 6)  $F_D$  Ton (Displaying value on monitor)
- 7)  $F_{up}$  Ton (Rope tension when Hook up)
- 8)  $h1$ , m (Hook lifting height)
- 9)  $h2$ , m (Hook height )
- 10)  $L$ , m (Rope length)  
 $L = (h1-h2)$

#### 2.4.1 (Calculation of compensation)

- 1) (Hook up)

$$F_{up} = F_m$$

$$F_c = F_m$$

$$F_D = F_c - L * w1$$

- 2)  $t$  (Hook down ,and in  $t$  seconds)

$$\text{AutoAdjust\_K1} = F_{up} / F_m$$

$$F_c = F_m$$

$$F_D = F_c - L * w1$$

- 3)  $t$  (after  $t$  seconds)

$$F_c = F_m * \text{AutoAdjust\_K1}$$

$$F_D = F_c - L * w1$$

- 5) (if Hook up, goto step 1)

2 t (Hook down ,and in t seconds)

$$F_c = F_m$$

$$F_D = F_c - L * w_1$$

3  $F_m$  K1 K11~K14 (Set K1 value depend on Range of  $F_m$ )

K1 (K11,K12,K13,K14)

4 t (after t seconds)

$$F_c = F_m * (1 + K1)$$

$$F_D = F_c - L * w_1$$

5 (if Hook up, goto step 1)

2.4.3

$$F_c = F_m$$

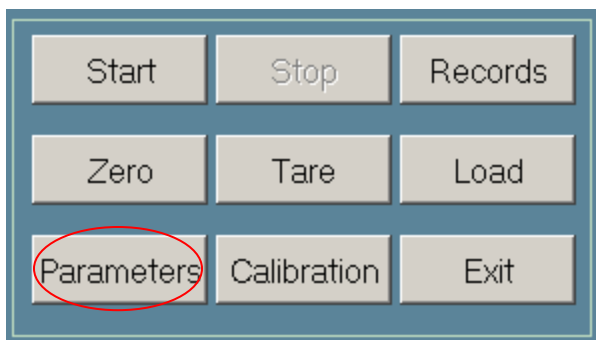
$$F_D = F_c - L * w_1$$

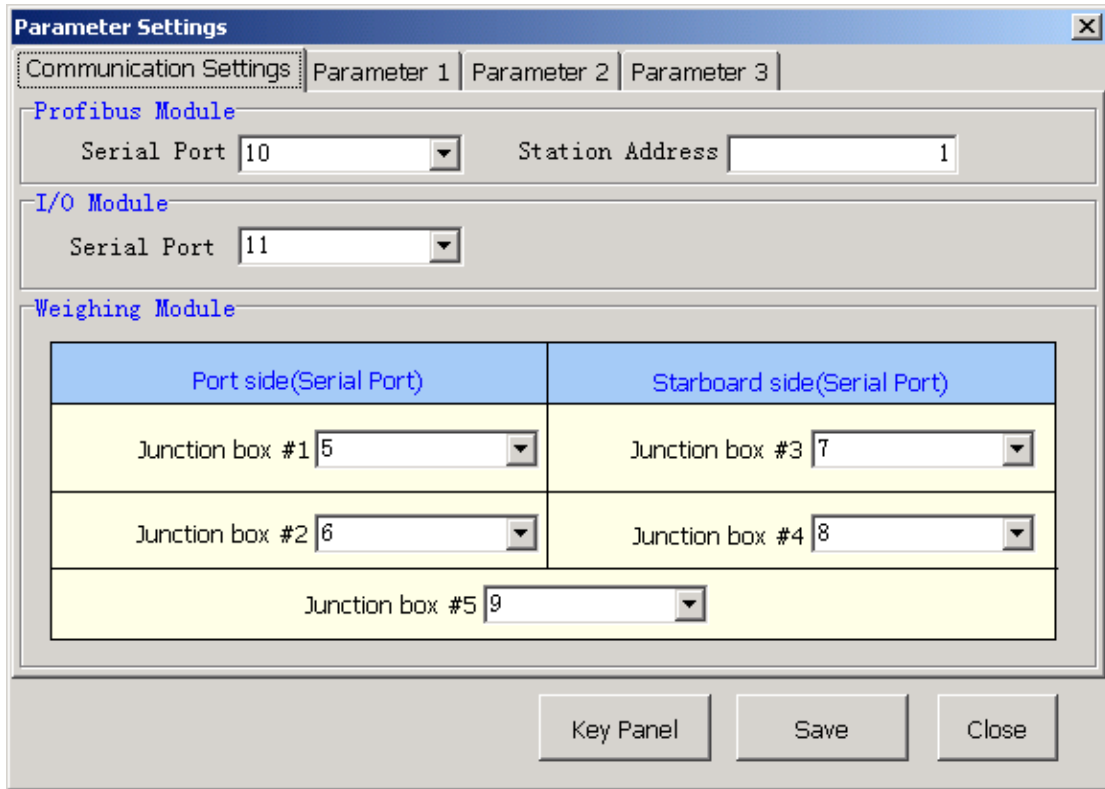
2.4.4

$$F_c = F_m$$

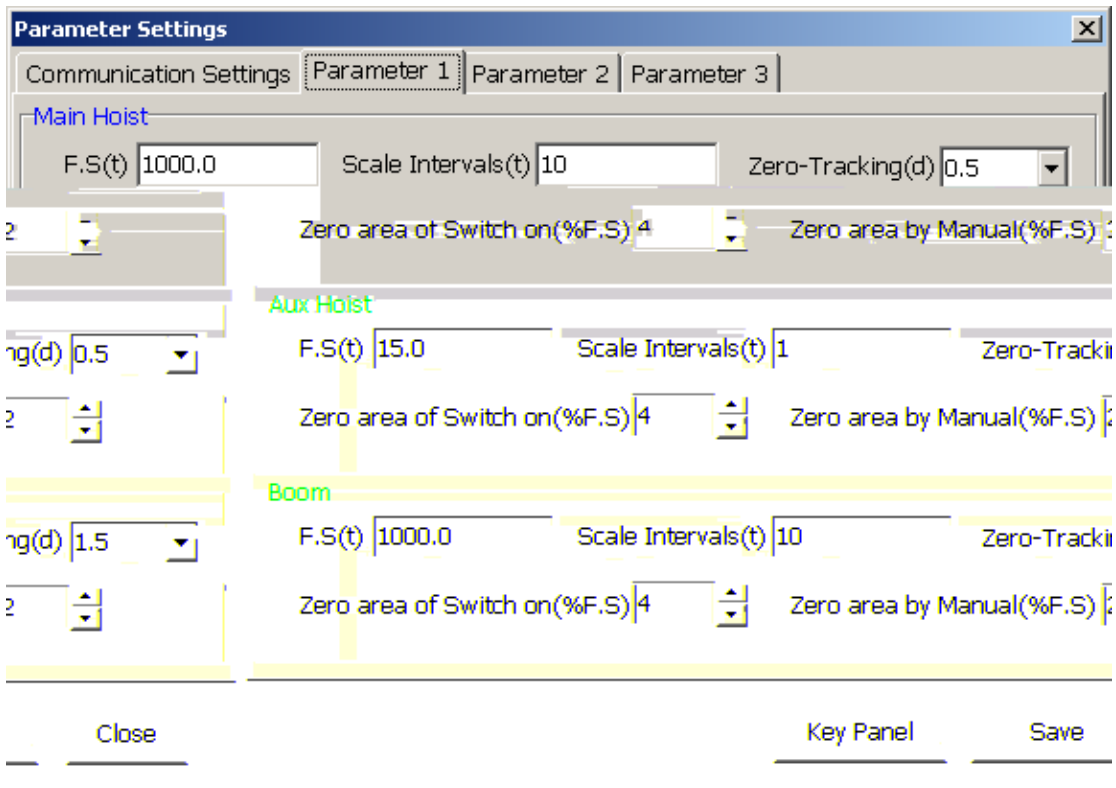
$$F_D = F_c$$

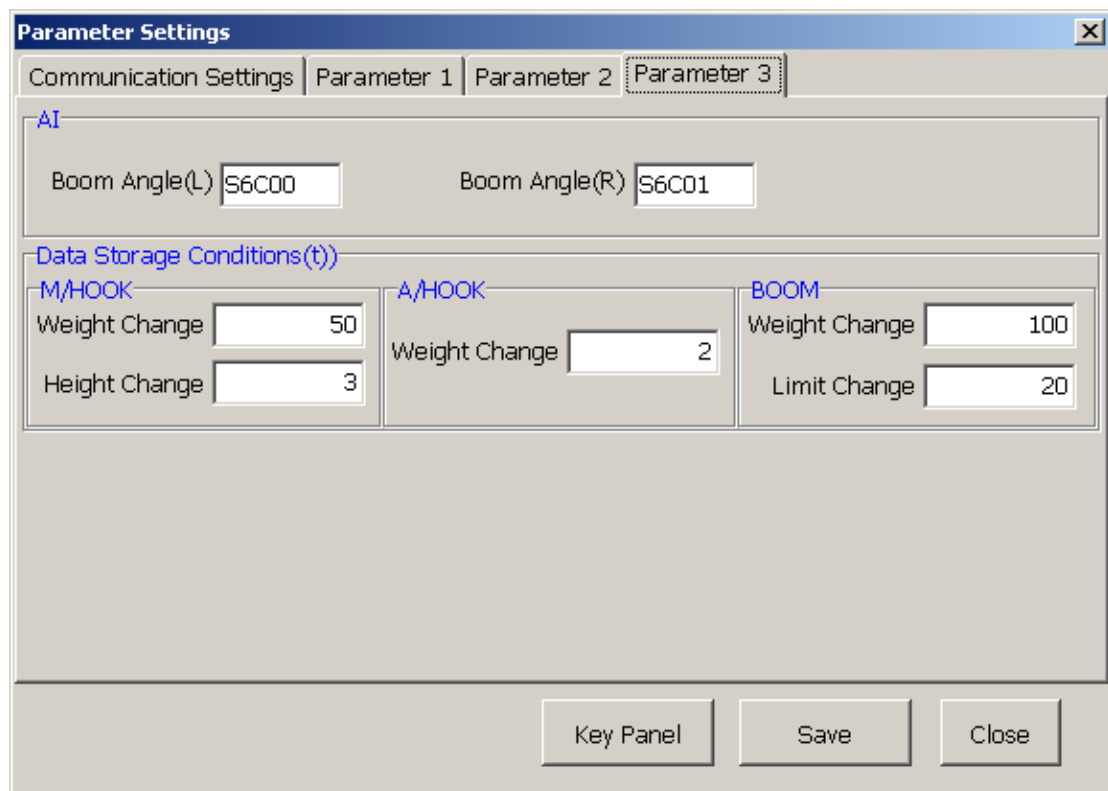
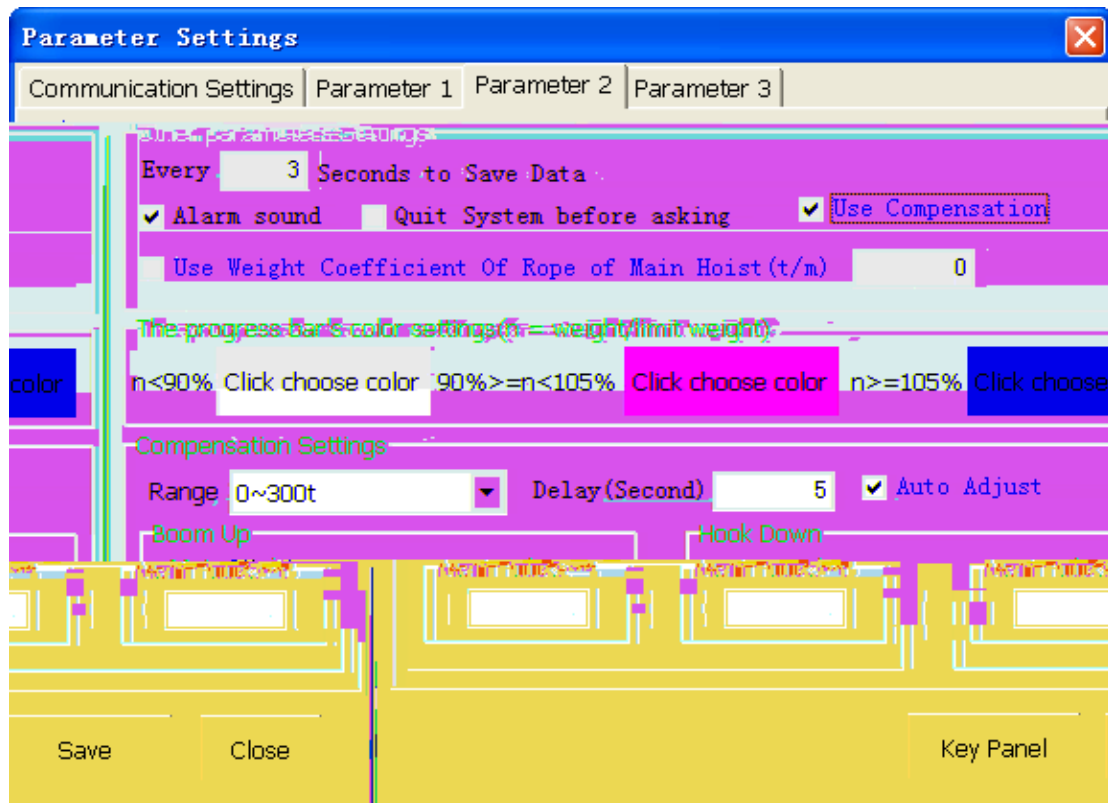
2.7



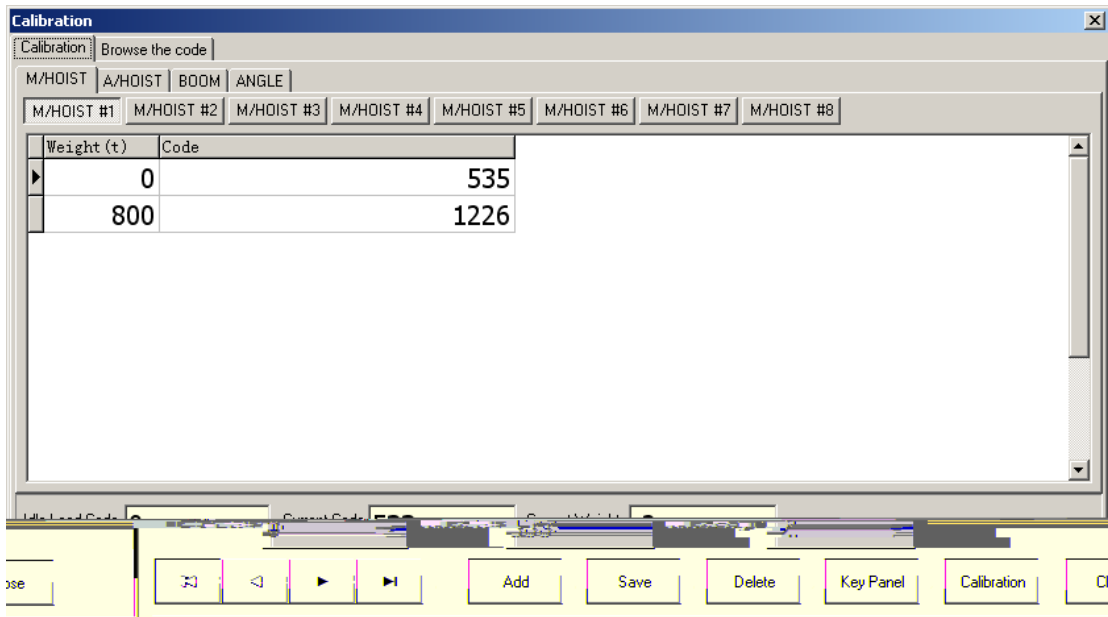
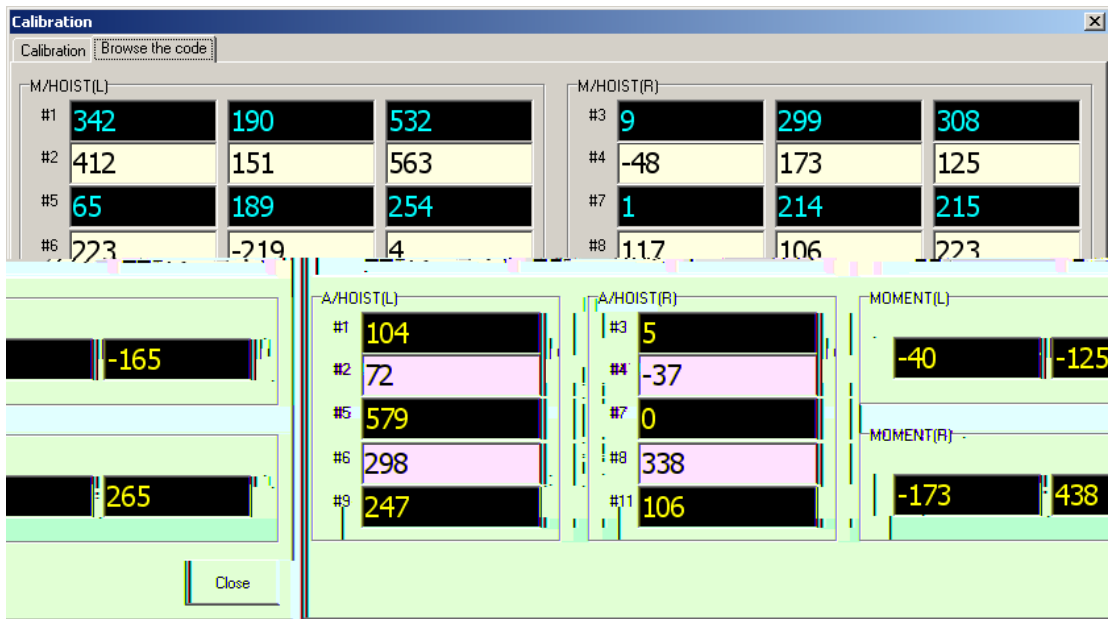
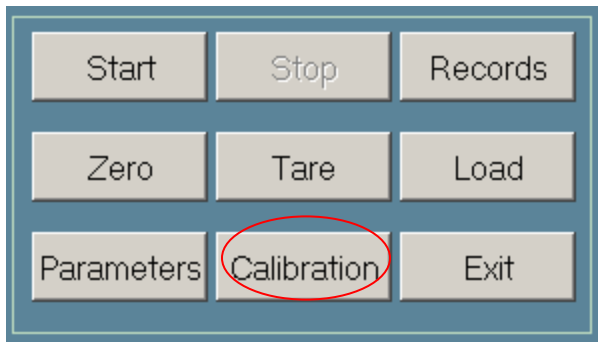


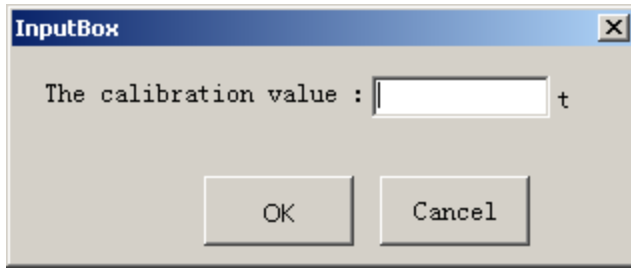
1.1.3



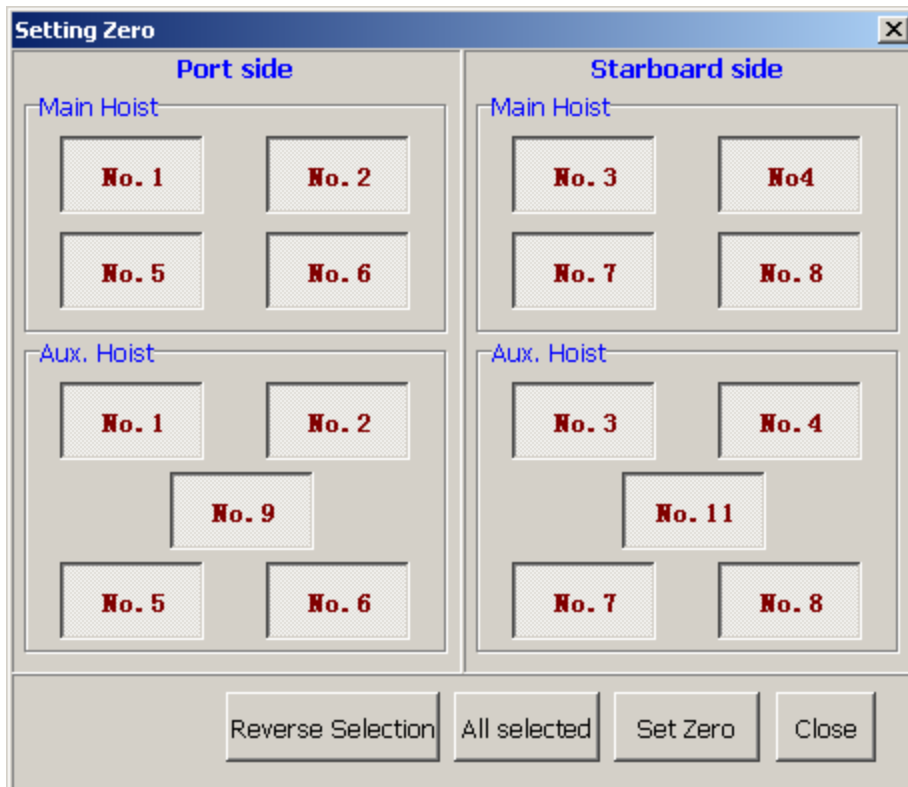
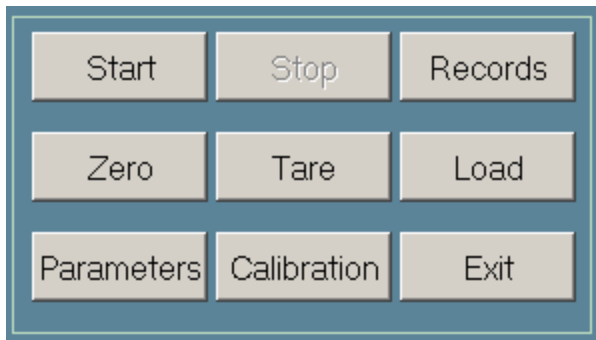


2.8

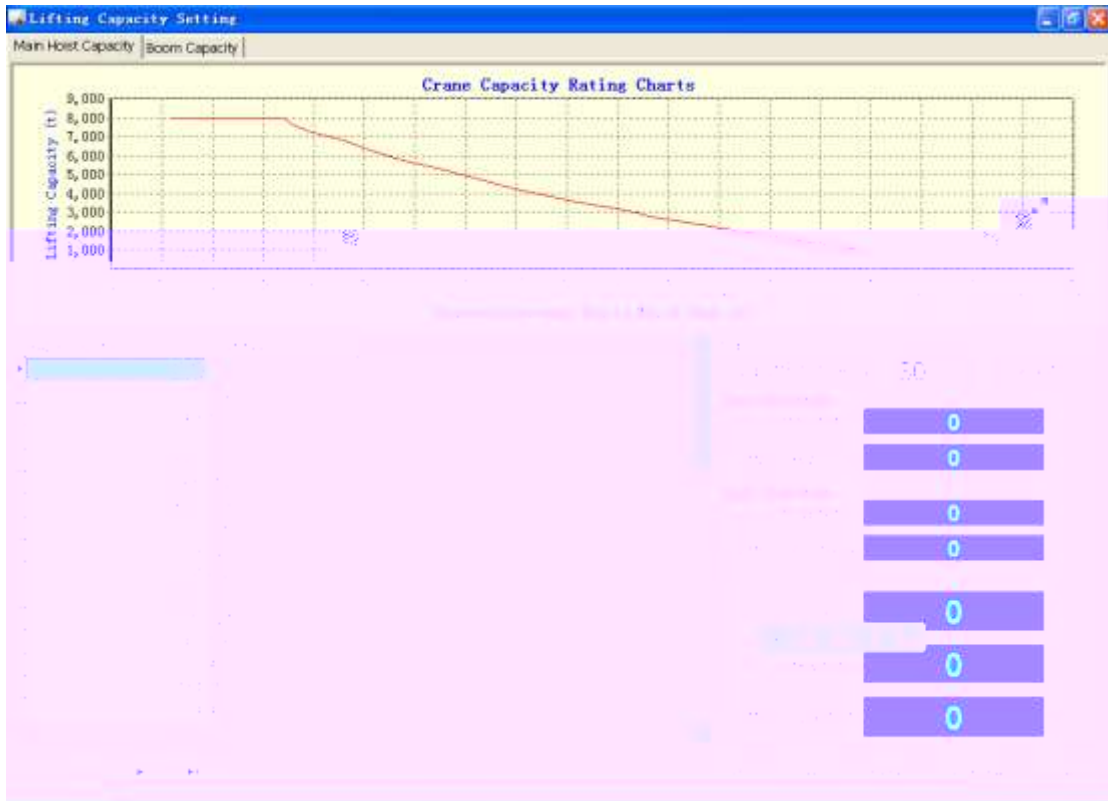
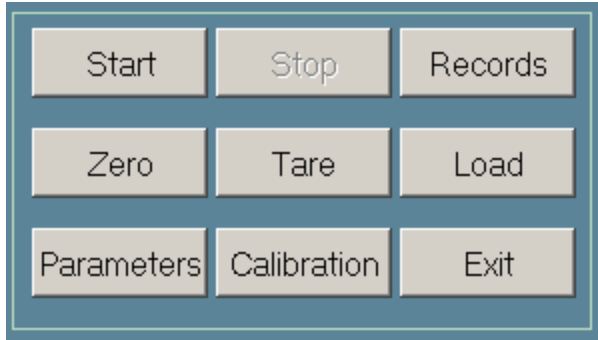


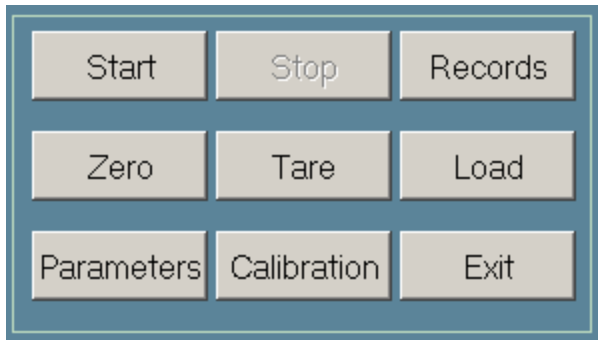
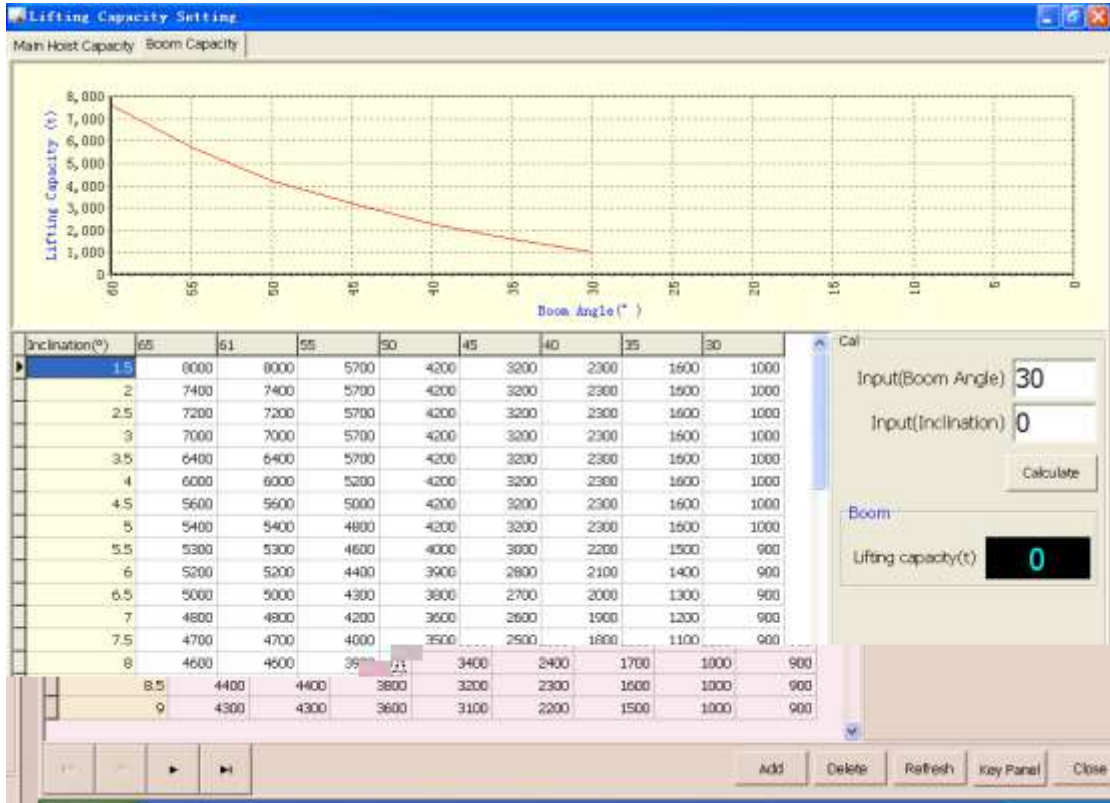


2.9









Weighing Records		Overload Records				
Starting Date/Time	2009-8-16	0:00:00	2009-8-31 23:59:59			
Customer	Begin Date/Time	End Date/Time	Remark			
a	2009-8-26 10:37:50		d			
aa	2009-8-26 11:42:49		aa			
cpw	2009-8-28 14:05:35					
hello-hello	2009-8-27 16:14:24	2009-8-27 16:16:30				
Date/Time	Boom1Angle	Boom2Angle	Total weight1(t)	Total weight2(t)	Trim(°)	Heel(°)
2009-8-28 14:05:54	59.0	59.9	0	0	0.4	14.8
2009-8-28 14:06:43	59.9	59.9	614	0	0.4	14.6
Name	Limit(t)	Tare(t)	Net(t)	Weight(t)	WeightLimit(%)	
MHoist-#1	757	890	0	890	115.2	

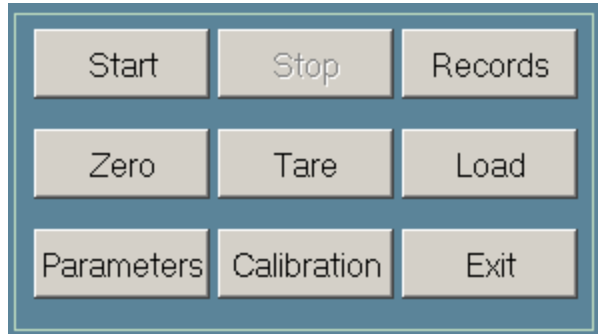
Records

Weighing Records: Overload Records

Starting Date/Time: 2009-8-29 0:00:00    2009-8-31 23:59:59    Query    Delete    Export    Close

Content	Date/Time	Tare(t)	Weight(t)	Limit(t)
MHost-#1 over load	2009-8-29 16:53:00	0	339	125
MHost-#5 over load	2009-8-29 16:53:00	0	254	125
MHost-#1 over load	2009-8-29 16:53:02	0	339	125
MHost-#5 over load	2009-8-29 16:53:02	0	254	125
MHost-#1 over load	2009-8-29 16:53:05	0	339	125
MHost-#5 over load	2009-8-29 16:53:05	0	254	125
MHost-#1 over load	2009-8-29 16:53:07	0	339	125
MHost-#5 over load	2009-8-29 16:53:07	0	254	125
MHost-#1 over load	2009-8-29 16:53:09	0	337	125
MHost-#5 over load	2009-8-29 16:53:09	0	254	125
MHost-#1 over load	2009-8-29 16:53:12	0	339	125
MHost-#5 over load	2009-8-29 16:53:12	0	254	125
MHost-#2 over load	2009-8-29 17:22:55	0	190	125
MHost-#2 over load	2009-8-29 17:23:04	0	289	125
MHost-#2 over load	2009-8-29 17:23:06	0	289	125
MHost-#2 over load	2009-8-29 17:23:09	0	273	125
MHost-#5 over load	2009-8-29 17:26:26	0	213	125
MHost-#5 over load	2009-8-29 17:26:29	0	210	125
MHost-#5 over load	2009-8-29 17:26:31	0	183	125
MHost-#5 over load	2009-8-29 17:26:34	0	162	125
MHost-#5 over load	2009-8-29 17:26:36	0	180	125
MHost-#5 over load	2009-8-29 17:26:38	0	198	125
MHost-#5 over load	2009-8-29 17:26:41	0	154	125
MHost-#1 over load	2009-8-29 16:51:15	0	330	125
MHost-#1 over load	2009-8-29 16:51:21	0	340	125
MHost-#1 over load	2009-8-29 13:18:57	0	905	757
MHost-#1 over load	2009-8-29 13:18:59	0	905	757
MHost-#1 over load	2009-8-29 13:19:01	0	905	757

2.13



**Customer Information** [X]

Customer

Remark

Key Panel

Running.	Stop	Records
Zero	Tare	Load
Parameters	Calibration	Exit