

KPX-1L

2012 3

.....1

.....1

1

2

.....1

.....2

4

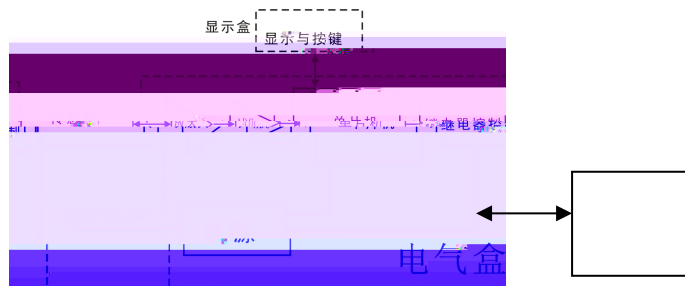
.....6

.....6

.....6

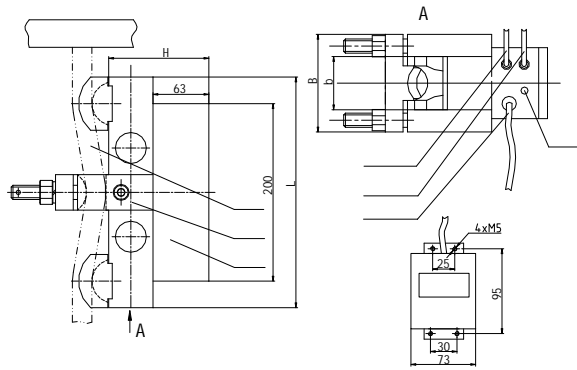
1

2





1



6-14
10-18

2

“ / “ - no -

A 1 / / / 3

:

(1)
(2) / 3 /
(3)

1) / 80 100 / 1 0 9 (/
“ PASS” 0.1t 999.9t 0.1t

1 / “ noLd”
2 / “ PASS”
/ 3

1 / 3
2 / F3 / 0574
/ 1 0 9 /
3 / / 3

F3-1

10.0mV/V

F3-2

0.1t 999.9t

/ / 1 0 9
/
/

- 1)
- 2)
- 3)

1			/	3	
2	/	F2		/	5513
3	/			/	
			/	3	
F2-1			85%	95%	90%
F2-2			100%	110%	
	105%				

4

	750. Ot				
1			/	3	
2	/	F1		/	7780
3	/				/
	3				/

(5)

(1)

	/		/
/			
/			
	/		
	/		
	/		

(2)

F1

750. Ot

F2

	/				
F2-1			85%	95%	90%
F2-2			100%	110%	105%

F3

F3-1

10. 0mV/V

F3-2

0. 1t 999. 9t

F4

0. 1s 9. 9s 2s

F5

" LO

" H "

" LO



C 199

400-887-4165

800-857-4165

0574-87562271

315033

<http://www.kelichina.com>