

KL3101-D3+

显 仪

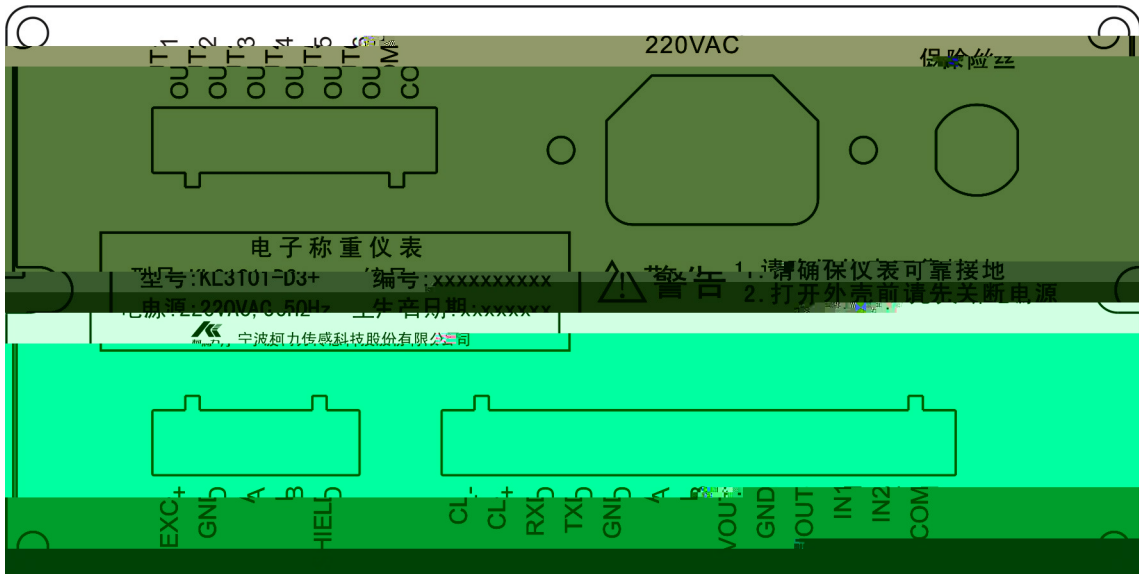
说 书

2017 9

- 请 细阅读 产 说 书
- 请 产 说 书 备查阅

录

术	1
仪 说	1
节 连	1
节 键 说	3
节 单 说	3
查询 设	3
节 继电 设	3
节 讯 设	4
节 传 设	5
节 拟 输 设	5
节 统 码 设	5
讯 说	6
节 PC连续 讯	6
节 Modbus-RTU 讯	8
节 讯 说	10
认	11
说	12

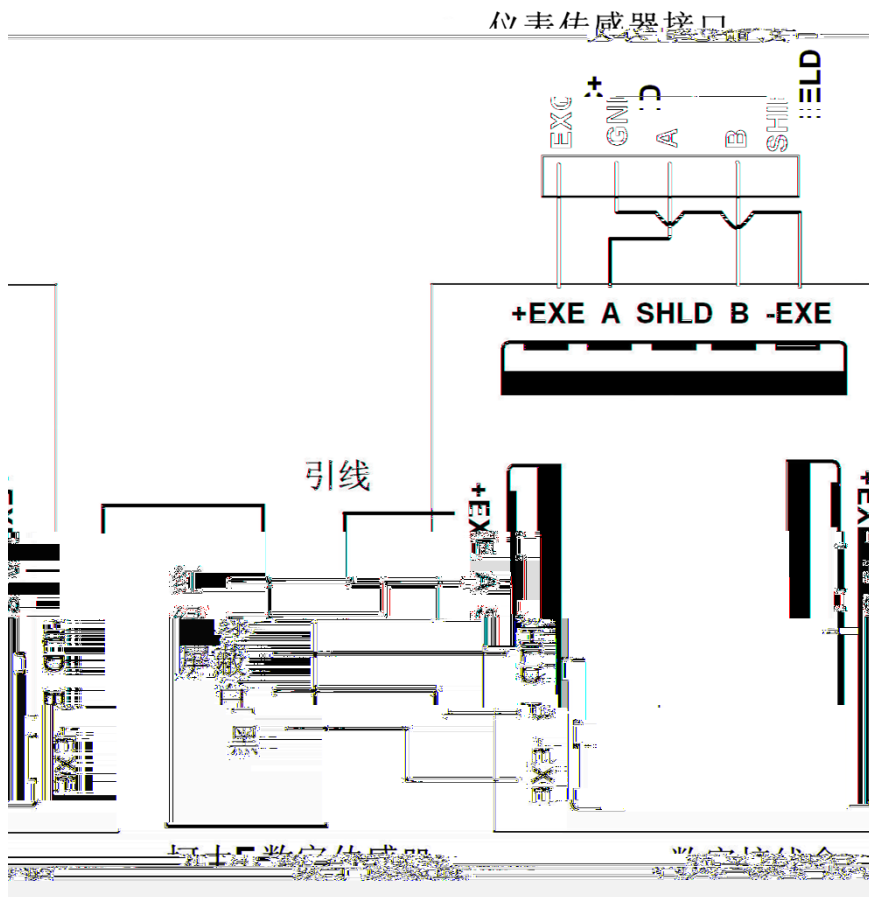


1. 220V 3

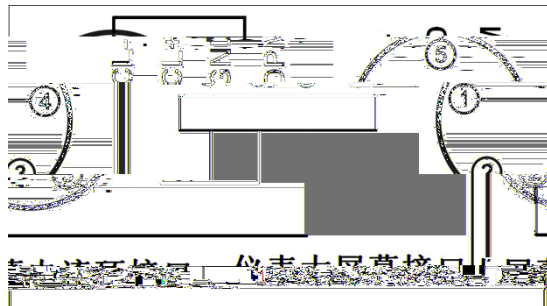
2.

3.

4.



5.



6.

6 0.36

“OUT1-
OUT6”

6
16

888888

Err

□ □ □

			SP-SET	1

2

3

4

5

6

7

8

9

a)

b)

c)

d)

e)

1	2	PArA 1 PArA 2	RS-SET	2
2	001	Adres	*** 001	001
3	2	bAUd * bAUd 2	***** 9600	3 0- 2400 480 0 9600 19200 2
4	0	CO-F * CO-F 0	***** Contus	0~5 0 1 1 MODBUS 2 2 3 3 4 4 5 5 0
5	0	CHEC * CHEC 0	***** nonE	0~2 0 1 2 0

1	3	PArA 1 PArA 3	LC-SET	3
2	01	NumbEr	** 01	01
3	2	dtP *	*****	0-

		dtp 2	ELC	2 t CLC ELC 2	CLC-
--	--	-------	-----	---------------------	------

1.

500

50

K

~

				4
		SurE 0 SurE 1		0: 1:
		SurE 0 SurE 1		0: 1:

				8
1	8	PArA 1 PArA 8	S-CODE	
2	888888	----- -----	S-CODE	6 8
3		UP *	S-CODE	

	0			1: 0 0
4		----- -----	S-CODE	()
5		----- -----	S-CODE	

□ □ □

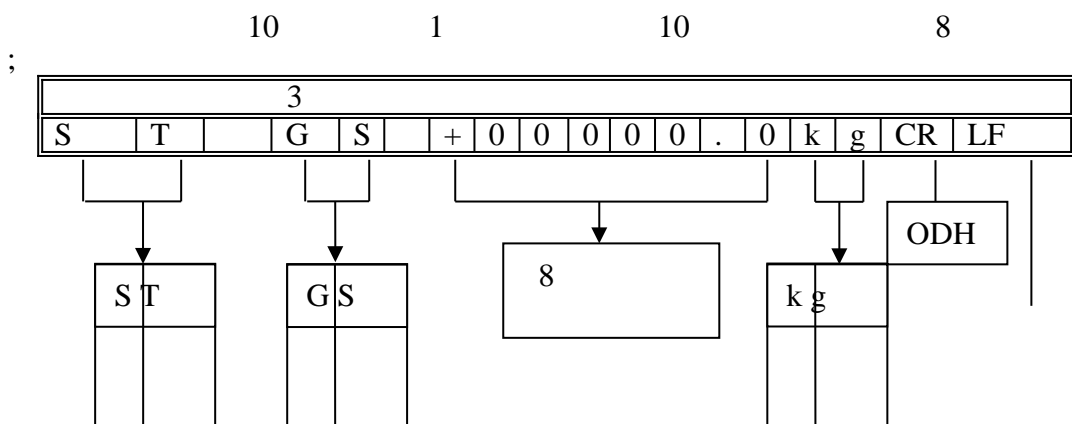
1	2	3	4	5	6
---	---	---	---	---	---

1. <StX> ASCII (02H)
2. A, B, C
3. , .6
4. 6
5. <CR> ASCII (ODH)
<CKS>

A			
Bits 0, 1, 2			
0	1	2	
0	0	0	KGKG00
1	0	0	KGKGX0
0	1	0	KGKGKG
1	1	0	KGKGX.X
0	0	1	KGKG.KG
1	0	1	KGX.KGX
0	1	1	KG.KGKG
1	1	1	X.KGKGX
Bits 3, 4			
3	4		
1	0		X1
0	1		X2
1	1		X5
Bit 5			1
Bit 6			0

B	
Bits	
Bit 0	= 0, = 1
Bit 1	: = 0, = 1
Bit 2	() = 1
Bit 3	= 1
Bit 4	: kg = 1
Bit 5	1
Bit 6	1

C	
Bit 0	0
Bit 1	0
Bit 2	0
Bit 3	= 1
Bit 4	(X10) = 1
Bit 5	1
Bit 6	0



U S
O L

N T
T R

OAH

Header1 Header2
Header 1
ST Stable
US Unsable
OL Over Load
Header 2
GS Gross data
NT Net data
TR Tare data

内容地址		说明（以下内容为只读）	
40001			
40002-40003			
40004	. 0	1=	
	. 1	1=	
	. 2	1=	
	. 3	1=	
	. 4	1=	
	. 5		
	. 6	0=	
	. 7	0=	
	. 8	1=	
	. 9	1=	
	. 10	1=	0=
	. 11	-	
	. 12	-	
	. 13	-	
. 14	-		
. 15	-		
40005-40020			

内容地址	说明（以下内容为可读可写）
40021-40022	1
40023-40024	2
40025-40026	3
40027-40028	
40029-40030	
40031	

□ □ □

S-CodE		888888
UP		1
E		3(10)
dECP		0
StAb		2(2.0E)
SumbEr		0
Pn		3(0.1)
Pn		4(2.0e)
Pn		5(100%)
Pn		5(100%)
FLt		2(level2)
FULL		10000
ZErO IN		0
LoAdIN		999999
CAL- rt		1.000000
SAdJ		1.00000
Addres		001
Co-F		0(Contus)
bAud	PC	2(9600)
CHEC		0(none)
SPILL		050
SP1	1	3000
SP2	2	4000
tArgEt	3	5000
toLEr		10

□ □ □

1. ---
2. -----
3. End
4. PASS
5. UArN

6. Err 00
 7. Err 03
 8. Under
 9. ECC 1~16
 10. Err 17
 11. Err 16
 12. Err 18
- 0
(1~16)
- 20

13. Err 19	
14. Err 20	
15. Err 21	
16. Err 22	
17. Err 29	
18. Err 31~46	1~16
19. Err 49	
20. Err 70	
21. ECC 71~86	n-70 C
22. Err 91	
23. Err Adr	1



地址：宁波市江北投资创业园C区 长兴路199号

服务热线：400-887-4165

传真：0574-87562271

邮编：315033

网址：<http://www.kelichina.com>