



R32

电子称重仪表
技术 使用手册



1

2 .



1

2

5



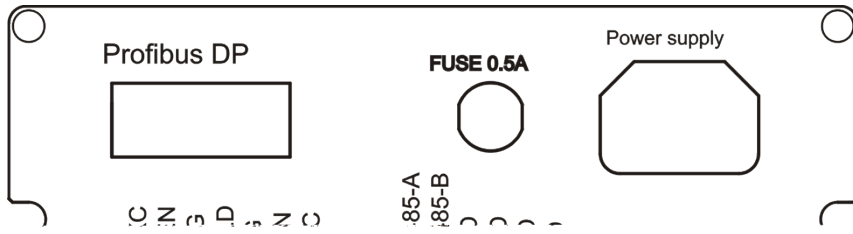
4



1	1
2	1
3	1
4	2
5	5
6	7
7	13
	15
	16
1	17
	18
	19
	20
	21
	22

1

4



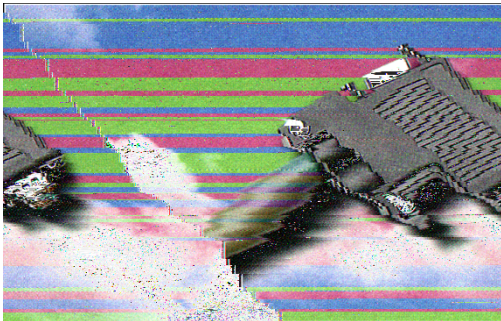
4.2.1

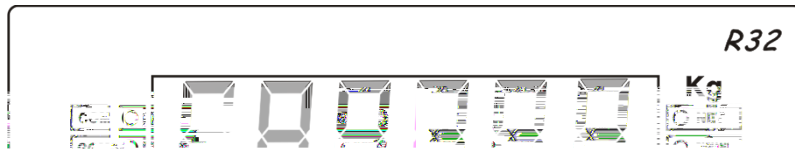
4.2.2

4.2.3

管脚定义	描述

4.2.4 Profibus DP





5.3.1

5.3.2

5.3.3

5.3.4

5.3.5

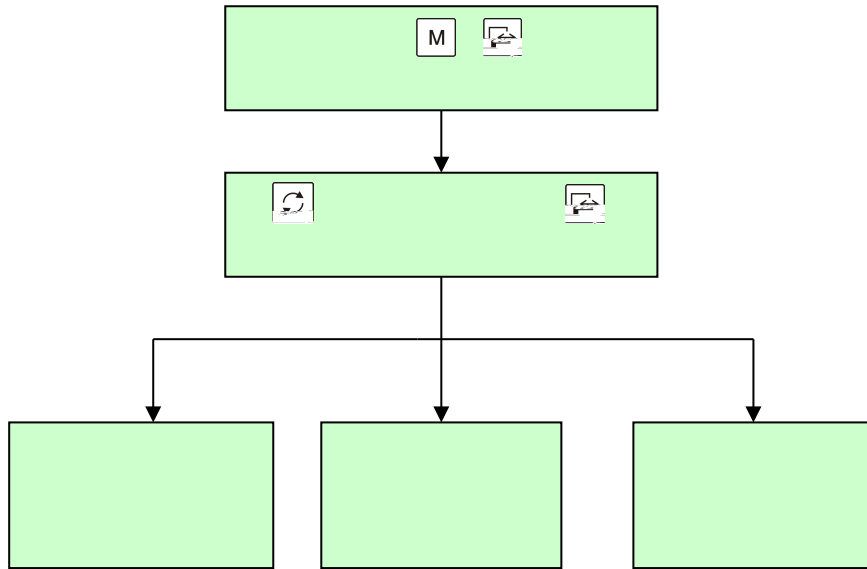
M

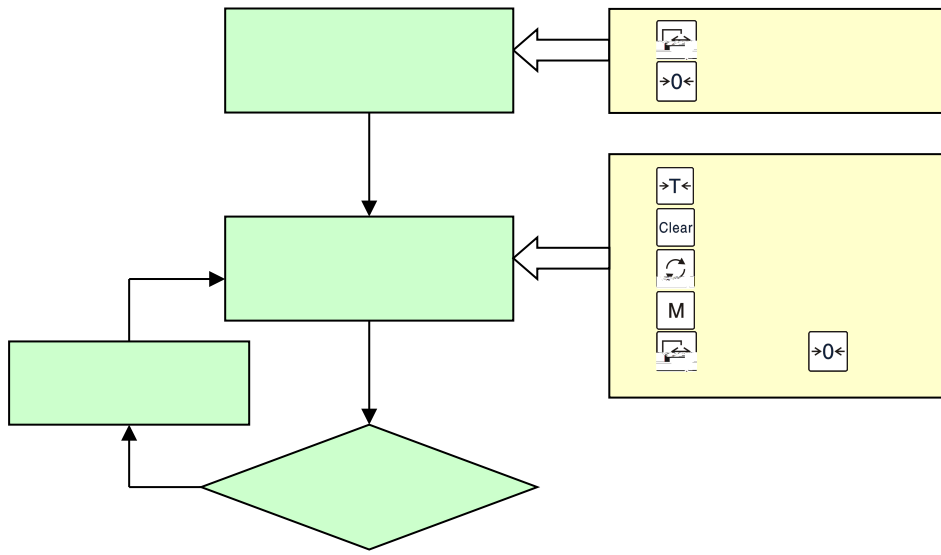
M

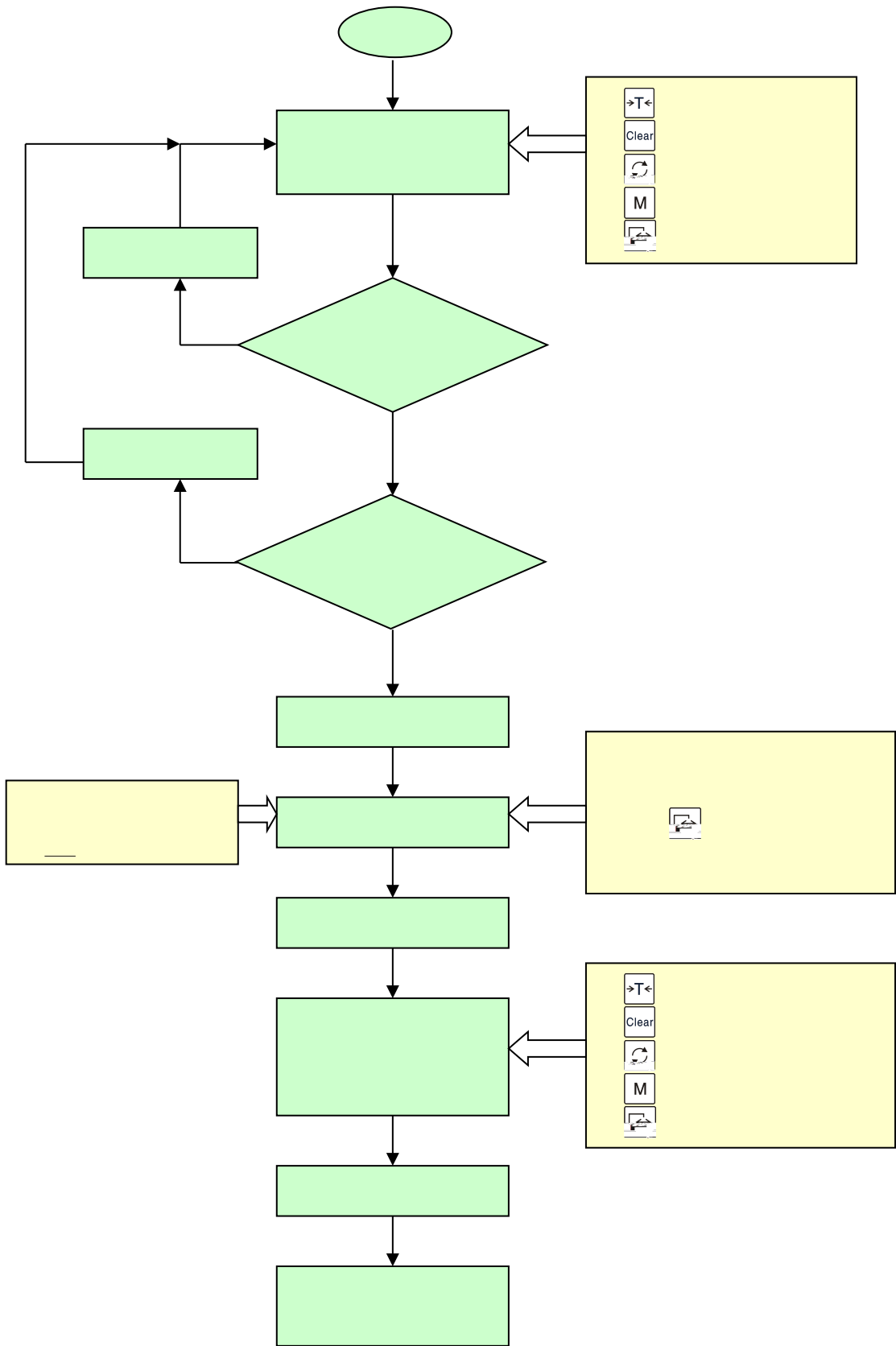
$\rightarrow 0 \leftarrow$

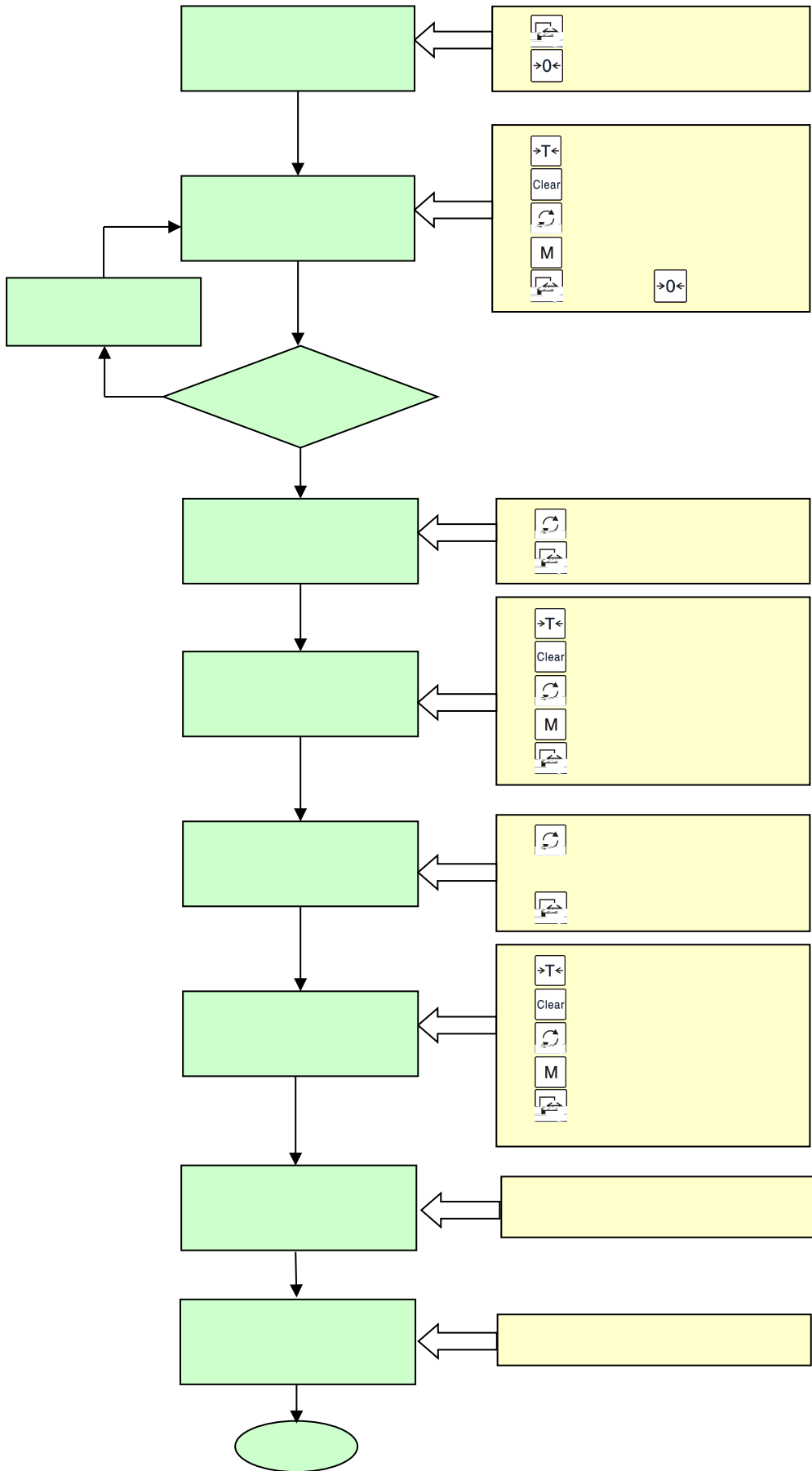
5.3.6

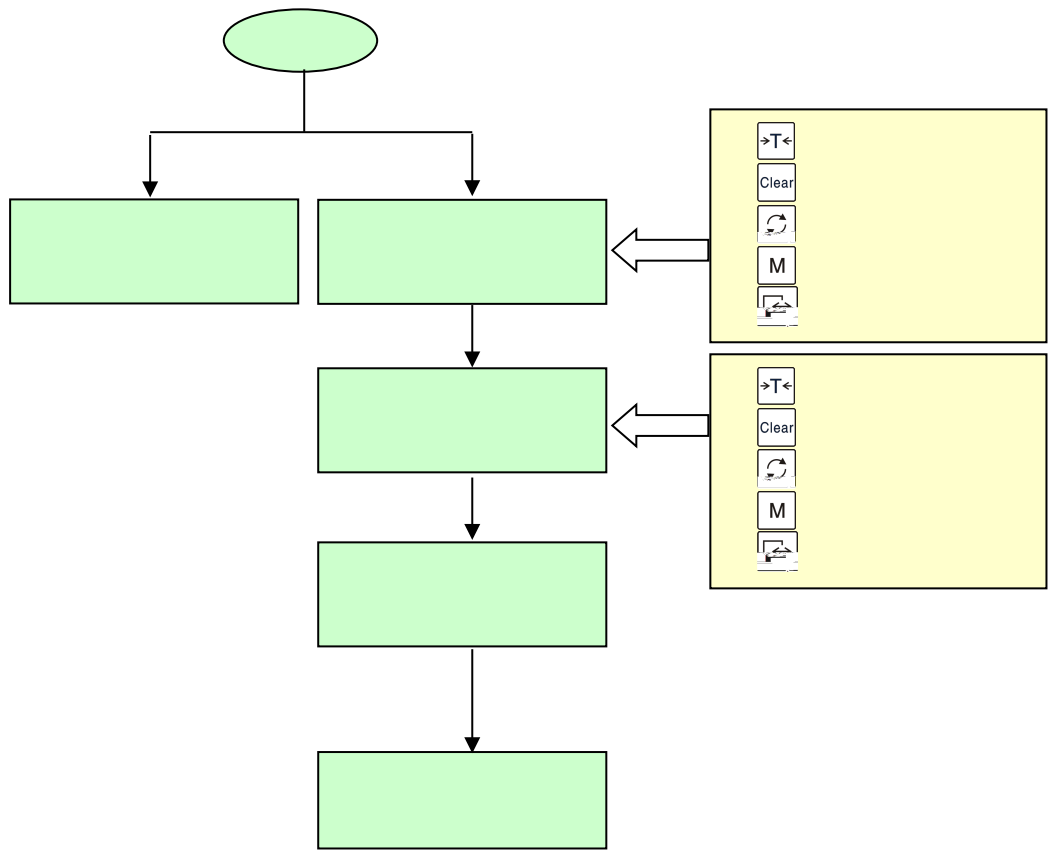












F2.6

F2.7

F2.8

F2.9

x=1 0.4uV

F2.10

;

F2.11

F3.1

F3.2

F3.3

F3.4

F3.5

F3.6

F3.7

	E -- 1		
	E -- 2		
	E -- 4		
	E -- 5		
	E -- 6		
	E -- 7		
	n o-		
	o.L/-o.L		

A			
Bits 0 , 1 , 2			
Bits 3 , 4			
Bit 5			
Bit 6			

B	
Bits	
Bit 0	
Bit 1	
Bit 2	
Bit 3	
Bit 4	
Bit 5	
Bit 6	

C	
Bit 0	
Bit 1	
Bit 2	
Bit 3	
Bit 4	
Bit 5	
Bit 6	

F 2		
F2.1		1
F2.2		1
F2.3		4%
F2.4		0.0d
F2.5		3d
F2.6		4
F2.7		0
F2.8		0
F2.9		0
F2.10		0
F2.11		0
F3		
F3.1		9600
F3.2		8
F3.3		0
F3.4		0
F3.5		2
F3.6		3
F3.7	Profibus DP	1

宁波柯力传感科技股份有限公司

地址：浙江省宁波市江北投资创业园 C 区长兴路 199 号

电话：800-857-4165 400-887-4165

传真：0574-87562289

邮编：315033

网址：<http://www.kelichina.com>

4903101318

201312V0.10

