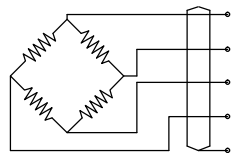
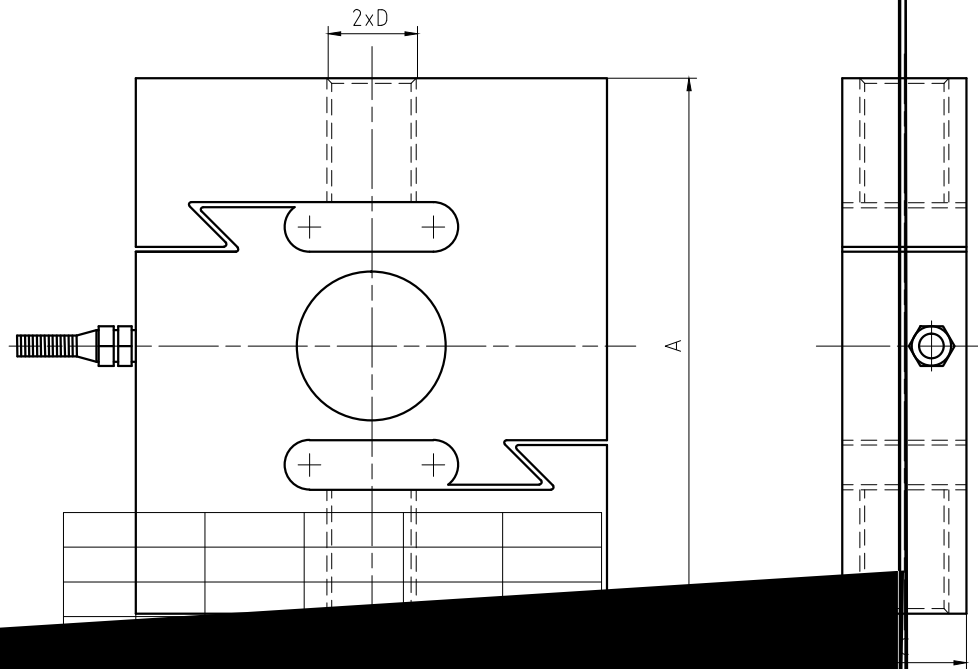


分钟) Creep(30min)	$\pm 0.02\%F.S$
影响 TC ZERO	$\pm 0.02\%F.S/10^{\circ}C$
影响 TC SPAN	$\pm 0.02\%F.S/10^{\circ}C$
Input resistance	$400 \pm 20 \Omega$
Output resistance	$352 \pm 3 \Omega$
Insulation resistance	$\geq 5000 M\Omega$
Nominal Temp Range	$-10 \sim +40^{\circ}C$
范围 Service Temp Range	$-30 \sim +70^{\circ}C$
Safe load limit	150%F.S
Breaking load	200%F.S
电压 Nominal of range excitation	$10 \sim 12 V DC$
Protection Class	IP66 (1~5t), IP67 (7.5~25t)
Material	合金钢 Alloy Steel
	Length=6m
	Diameter: $\varnothing 5$



- + Exc+(Red)
- + Sig+(Green)
- Exc-(Black)
- Sig-(White)
- Shield

重量比