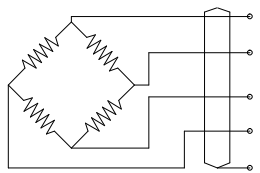
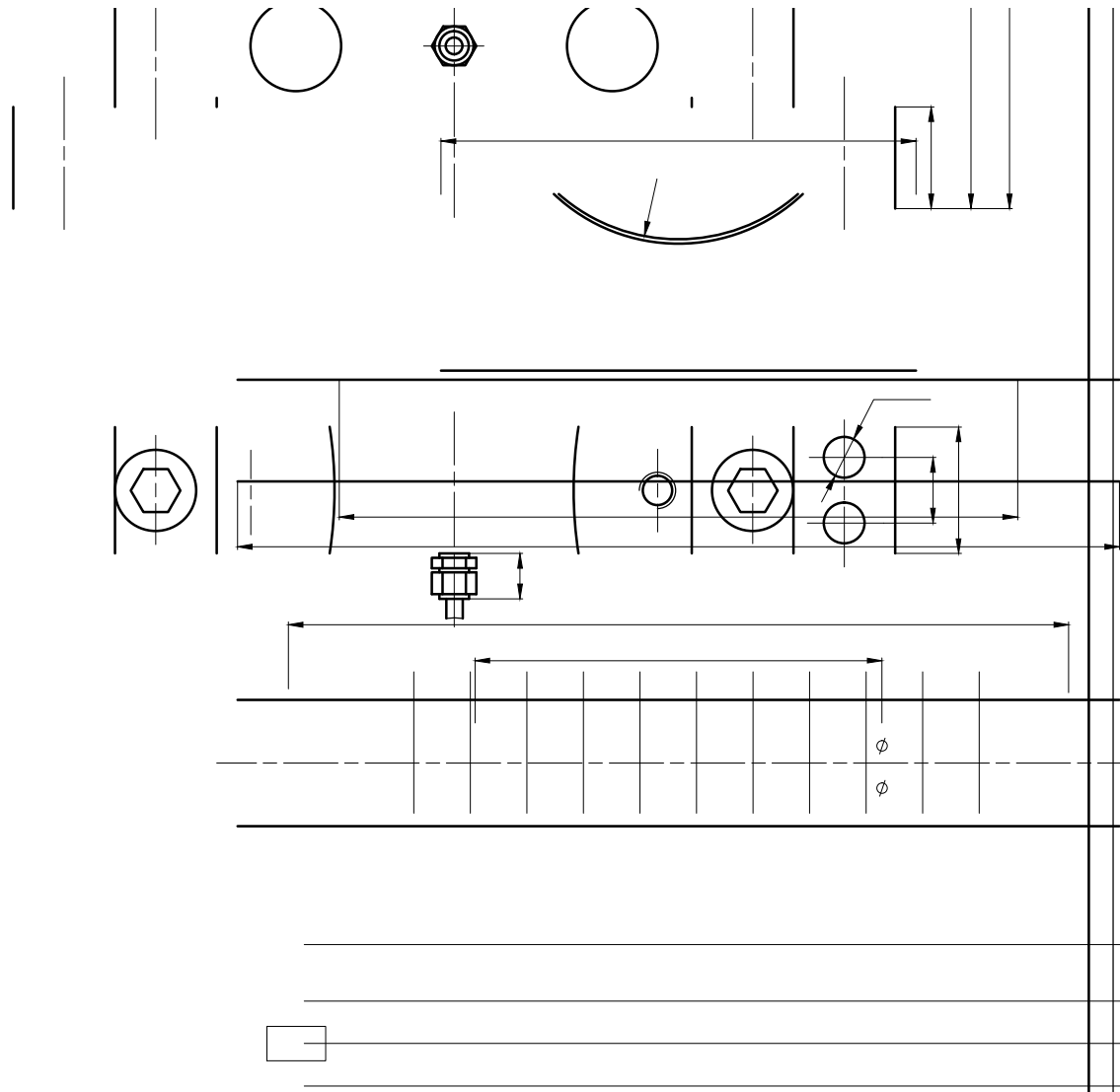


	mV/V	10~30t: 2.0±0.002 40~60t: 1.5±0.01
	%F.S	±0.1
30	%F.S	±0.03
	%F.S	±1
	%F.S/10	±0.02
	%F.S/10	±0.02
		750±50
		702±5
	M	≥5000
		-30~+70
	%F.S	150
	%F.S	200
	V DC	10~12
	V DC	15
	IP68	
	mm	
	mm	10~30t: Ø60~Ø150 40~60t: Ø80~Ø170



+ Excitation+
 + Signal+
 - Excitation-
 - Signal-
 Shield



宁波